



ENVIRONMENTAL CONTAINMENT & SUPPLY CATALOG



waterMaze
WATER TREATMENT SYSTEMS

EFFECTIVE MARCH 3, 2014



Lorchem Technologies, Inc.
1150 Davis Road, Suite J, Elgin, IL 60123

Phone: (847) 468-8800 • Fax: (847) 468-8811
info@lorchem.com • www.lorchem.com

TABLE OF CONTENTS

Eco-Efficient Products..... 4



Salvage / Overpack Drums..... 5



Spill Pallets..... 7-10



Portable Containment & Flexibles11-14



Dispensing15-18



Storage19-22



Spill Kits23-29



Sorbents.....30-31



Stormwater32



Funnels.....33



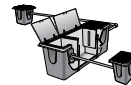
Steel Products34



Cylinder Products.....35



Collection Pits / Accessories36



Pit Management / Bioremediation37



Pretreatment / Oil Water Separators38



Filtration39



Ozone Generator40



Water Blaster / Evaporation.....41



Steel Washpads42-44



Cargo Containers45



Chemicals.....46

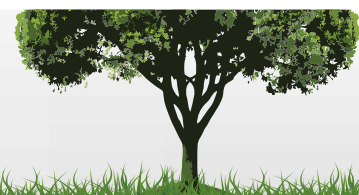


Chemical Compatability Charts47-50

ECO-EFFICIENT PRODUCTS



The new ECO-Efficient line is made from up to 100% recycled and 100% recyclable material, making them no-waste products! Easy on the earth and easy on your wallet.



2-DRUM ECO POLY-SPILLPALLET 2000

This secondary containment system is engineered to meet the rigors of today's regulatory environment.



Part No.	Description	Price
8.752-574.0	Eco Poly-Spillpallet 2000	\$321
8.752-575.0	Eco Poly-Spillpallet 2000 w/ Drain	\$357

POLY-SPILLPALLET SLIM-LINE 6000

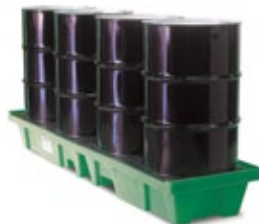
Rated at 6,000 lb handling capacity and 83-gallon sump, this Poly-Spillpallet Slim-Line meets EPA regulation 40 CFR 264.175. Its square 50" x 50" footprint with a low 12" profile saves space, yet easily holds four (4) 55-gallon drums.



Part No.	Description	Price
8.752-588.0	Eco Poly-Spillpallet Slim-Line 6000	\$386
8.752-589.0	Eco Poly-Spillpallet Slim-Line 6000 w/ Drain	\$421

LOW PROFILE IN-LINE POLY-SPILLPALLET 3000

Store drums in-line near a wall, between columns, and in all places thought to be unusable!



Part No.	Description	Price
8.752-552.0	Eco Inline Poly-Spillpallet 3000	\$398
8.752-553.0	Eco Inline Poly-Spillpallet 3000 w/ Drain	\$433

95-GALLON ECO POLY-SPILLPACK

Not only will you meet regulations, but you will exceed your expectations of earth-friendly containment by using the official 95-Gallon overpack! Made from up to 100% recycled material!



Part No.	Description	Price
8.752-201.0	95 Eco-Overpack	\$233

2 & 4-DRUM HARDCOVER & SPILLPALLET

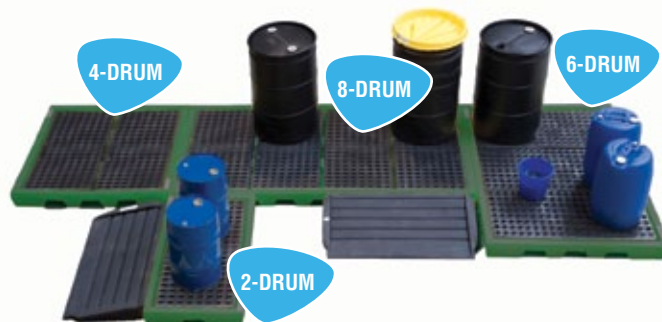
Ideal for indoor/outdoor storage of up to two (2) 55-gallon drums. Roll-top design allows for use in limited space or next to buildings where swing-open doors would be a problem.



Part No.	Description	Price
8.752-383.0	2-Drum Eco Hardcover	\$1,190
8.752-384.0	2-Drum Eco Hardcover w/ Drain	\$1,226
8.752-387.0	4-Drum Eco Hardcover	\$1,524
8.752-388.0	4-Drum Eco Hardcover w/ Drain	\$1,560

2,4,6 AND 8-DRUM WORKSTATIONS

There's no need to worry about incidental spills on your factory floor. Workstations are the easiest to load with low profile design and optional ramp. Each workstation is designed for stand-alone use or can combine with other Workstations for a customized work area.



Part No.	Description	Price
8.752-565.0	2-Drum ECO Workstation	\$281
8.752-562.0	4-Drum ECO Workstation	\$197
8.752-560.0	6-Drum ECO Workstation	\$464
8.752-556.0	8-Drum ECO Workstation	\$726

SALVAGE DRUMS / OVERPACKS



FEATURES AND BENEFITS:

- Meets performance-oriented packaging requirement of US DOT and UN regulations.
- Twist down lid for safe closure
- Closed cell gasket in lid seals closure - lid will only seal if loaded
- Castellations in lid allow for easy closing with pole or wooden 2" x 4"
- Double wall lid gives added strength
- Molded area allows for easy gripping and lifting by material handling equipment
- Ribbed design provides extra strength
- 100% UV protected polyethylene provides protection over a wide range for chemicals
- Drums are translucent in order to see contents inside the drum



WHAT'S THE DIFFERENCE?

OVERPACK

Provides protection for packages of solids or for convenience in handling a package or consolidating packages of solids.
*Not to be used for transportation of hazardous material.

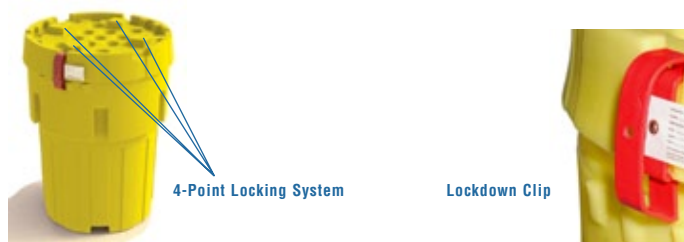
SALVAGE DRUM

Used in the transport of damaged or leaking drums containing hazardous liquids and hazardous materials.

NOTE: - All Poly-Overpacks are rated as salvage drums except for the Poly-Overpack 180T and 600 models.

ENVIROSALV™ POLY SALVAGE DRUM The "Locking" Overpack Salvage Drum of the Future!

Poly Salvage Drum Plus allows for safe and secure shipments of hazardous materials. The lockable EnviroSalv™ Poly Salvage Drum is built stronger and seals tighter for added strength, security and convenience.



Part No.	Description	Price
8.752-203.0	EnviroSalv™ Poly Salvage Drum Plus	\$267
8.752-204.0	EnviroSalv™ Lock Down Security Kit	\$31

All overpacks and salvage drums are molded from FDA approved material.

Note

**ALL OVERPACKS AND
SALVAGE DRUMS ARE
MOLDED FROM FDA APPROVED MATERIAL**

SALVAGE DRUMS / OVERPACKS

OVERPACKS ARE AVAILABLE IN SMALL, MEDIUM, LARGE, AND HUGE SIZES!



POLY-OVERPACK 20 & 30 SALVAGE DRUMS

Big Features and Big Savings!

New 20 and 30-gallon Salvage Drums are versatile units that can directly contain solids and sludges with security.



Part No.	Description	Price
8.752-198.0	Poly-Overpack 20	\$76
8.752-199.0	Poly-Overpack 30	\$100

POLY-OVERPACK 65 SALVAGE DRUM

Poly-Overpack 65 meets Group 1 packaging standards, Salvage Drum regulations, and is designed to fit 30-gallon drums.



Part No.	Description	Price
8.752-196.0	Poly-Overpack 65	\$217

POLY-OVERPACK 95/110 SALVAGE DRUM

Is Your Overpack Really a Salvage Drum?

Poly-Overpack 95 meets Group 1 packaging standards and salvage drum regulations (unlike competing overpacks).



Part No.	Description	Price
8.752-200.0	Poly-Overpack 95	\$240
8.752-202.0	Poly-Overpack 110	\$338

DRUM LIFTER

Salvage Drum loading is one of the trickiest drum handling jobs. This lifter makes it easy!

- 1,000 lbs handling capacity
- Lifts open-head or tight-head pails & drums
- Slim design for loading drums into salvage drums



Part No.	Description	Price
8.752-376.0	Drum Lifter	\$333

WHEELED OVERPACK SALVAGE DRUMS

Wheeled Overpacks™ are the industry's first one-piece overpack. As a Salvage Drum and dolly all in one, it eliminates the need for a separate dolly for transportation.



Part No.	Description	Price
8.752-206.0	Wheeled Overpack 95	\$345
8.752-205.0	Wheeled Overpack 50	\$321

POLY-OVERPACK 180T

The Poly-Overpack® 180T offers a large 180-gallon capacity to handle the big jobs, while its Tight Grip feature saves you time and money.

**Not rated as a salvage drum*



Part No.	Description	Price
8.752-197.0	Poly-Overpack 180T	\$855

POLY-OVERPACK 600

Designed specifically for the storage and transport of large transformers, the Poly-Overpack® 600 offers an easy, cost-effective way to keep larger quantities of hazardous fluids contained.

**Not rated as a salvage drum*



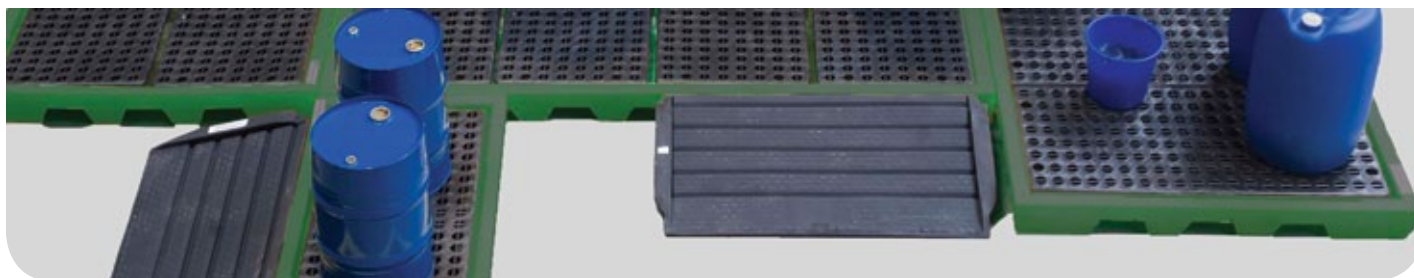
Part No.	Description	Price
8.752-195.0	Poly-Overpack 600	\$2,174

Did you Know?

RATED SALVAGE DRUMS PASS EXTENSIVE TESTING:

- Loaded Drop Test from 6' high
- Loaded Stack Test - 3 high for 72 hours
- 3 PSI Pressure Test

Salvage Drums are tested and certified every 12 months!



2-DRUM POLY-SPILLPALLET 2000

This secondary containment system is engineered to meet the rigors of today's regulatory environment. Made with 100% Polyethylene, it provides excellent chemical resistance.

FEATURES & BENEFITS:

- Meets EPA regulations
- Holds up to 2,000 lbs
- Forkliftable
- Removable grate for easy cleaning
- Model w/ drain available
- Optional tarp available (see pg. 9)



Sump Capacity: 58 Gallons
Dims: 53.5" L x 29" W x 17" H

Part No.	Description	Price
8.752-572.0	Poly-Spillpallet 2000	\$336
8.752-573.0	Poly-Spillpallet 2000 w/ Drain	\$371

LOW PROFILE IN-LINE POLY-SPILLPALLET 3000

Store drums in-line near a wall, between columns, and in all places thought to be unusable!

FEATURES & BENEFITS:

- Holds (4) 55-gallon drums
- Low profile - 12"
- Holds up to 3,000 lbs handling capacity weight
- Raised edge on back and side helps orient barrels on pallet
- Non-skid removable grates
- 100% polyethylene
- Model w/ drain available
- Optional tarp available (see pg. 9)



Sump Capacity: 66 Gallons
Dims: 98" L x 25.25" W x 12" H

Part No.	Description	Price
8.752-550.0	Inline Poly-Spillpallet 3000	\$405
8.752-551.0	Inline Poly-Spillpallet 3000 w/ Drain	\$440

POLY-SPILLPALLET 6000 & POLY-SLIM-LINE 6000

Rated at 6,000 lbs handling capacity and 83-gallon sump, this Poly-Spillpallet meets EPA regulation. Its square 50" x 50" footprint saves space, yet easily holds four (4) 55-gallon drums.

Poly-Slim-Line 6000 offers all of the same advantages as our Poly-SpillPallet 6000...and more!

FEATURES & BENEFITS (Poly-Spillpallet 6000):

- Holds (4) 55-gallon drums
- Holds up to 6,000 lbs handling capacity weight
- Raised edge on back and side helps orient barrels on pallet
- Non-skid removable grates
- 100% polyethylene
- Model w/ drain available
- Optional tarp available (see pg. 9)



POLY-SPILLPALLET 6000

Sump Capacity: 66 Gallons
Dims: 50" L x 50" W x 17" H

FEATURES & BENEFITS (Poly-Slim-Line 6000):

- Holds (4) 55-gallon drums
- Low profile - 12"
- Holds up to 6,000 lbs handling capacity weight
- Raised edge on back and side helps orient barrels on pallet
- Non-skid removable grates
- 100% polyethylene
- Model w/ drain available
- Optional tarp available (see pg. 9)



POLY-SLIM-LINE 6000

Sump Capacity: 66 Gallons
Dims: 54" L x 54" W x 12" H

Part No.	Description	Price
8.752-543.0	Poly-Slim-Line 6000	\$476
8.752-544.0	Poly-Slim-Line 6000 w/ Drain	\$512
8.752-586.0	Poly-Spillpallet 6000	\$405
8.752-587.0	Poly-Spillpallet 6000 w/ Drain	\$440

Note

AVOID A VIOLATION WITH OUR POLY SPILL PALLETS.
MEETS EPA/CFR REGULATION

SPILL PALLETS

2 & 4-DRUM HARDCOVER & SPILLPALLET

Ideal for indoor/outdoor storage of up to two (2) 55-gallon drums. Roll-top design allows for use in limited space or next to buildings where swing-open doors would be a problem.

FEATURES & BENEFITS:

- 100% UV protected polyethylene provides protection over a wide range for chemicals
- Dual-sided / rear loadable and lockable doors
- Non-skid removable grates
- Optional Ramp available
- Optional Ramp Extender available
- Models w/ drain available

Note: Some assembly required.



Sump Capacity: 58 Gallons
Dims: 60" L x 37.25" W x 72.63" H

Part No.	Description	Price
8.752-381.0	2-Drum Hardcover	\$1,202
8.752-382.0	2-Drum Hardcover w/ Drain	\$1,238
8.752-385.0	4-Drum Hardcover	\$1,543
8.752-386.0	4-Drum Hardcover w/ Drain	\$1,579

POLY-RAMP

Get big performance at a great price with our Poly Ramp. The ribbed non-skid surface allows for safe walk-ups. Holds up to 1,000 lbs of UDL weight.



Handling Capacity: 1,000 lbs
Dims: 68" L x 30.75" W x 12.5" H

FEATURES & BENEFITS:

- 100% UV protected polyethylene provides protection over a wide range of chemicals
- 10-degree ramp slope
- Ribbed, non-skid surface for safe walking

Part No.	Description	Price
8.752-549.0	Poly-Ramp	\$367

RAMP EXTENDER

Works with the Poly-Ramp to accommodate 17" high pallets and the 2-Drum Hardcover. No more relying on expensive and obtrusive metal ramps.



Part No.	Description	Price
8.752-548.0	Poly-Ramp Extender	\$102

2,4,6 AND 8-DRUM WORKSTATIONS



There's no need to worry about incidental spills on your factory floor. Workstations are the easiest to load with low profile design and optional ramp. Each Workstation is designed for stand-alone use or can combine with other Workstations for a customized work area.

ECO-Efficient green models available - see page 4.

FEATURES & BENEFITS:

- Forkliftable when empty
- Tough, one-piece polyethylene construction that is UV resistant and chemical resistant
- Low-profile Workstations actually become part of your factory floor, optimizing space for increased safety and efficiency
- Makes drum loading easy
- Large sump capacity catches incidental spills
- Multi-Purpose Work Ramp™ hooks onto any Workstation for easy loading
- Removable heavy-duty structural foam for easy cleaning
- Rolled-edge design helps resist cracking and warping

2 Drum Workstation

Sump Capacity: 22 Gallons
Handling Capacity: 2,400 lbs
Dims: 53" L x 28.5" W x 5.63" H

6 Drum Workstation

Sump Capacity: 61 Gallons
Handling Capacity: 7,000 lbs
Dims: 77" L x 53" W x 6" H

4 Drum Workstation

Sump Capacity: 41 Gallons
Handling Capacity: 6,000 lbs
Dims: 53" L x 53" W x 6" H

8 Drum Workstation

Sump Capacity: 77 Gallons
Handling Capacity: 8,000 lbs
Dims: 100" L x 53.25" W x 6" H

Part No.	Description	Price
8.752-564.0	2-Drum Workstation	\$288
8.752-561.0	4-Drum Workstation	\$369
8.752-559.0	6-Drum Workstation	\$476
8.752-555.0	8-Drum Workstation	\$740

LINK-LOCK

Securely Hooks Multiple Workstations Together

Link and lock multiple Workstations together in a wide variety of configurations. Sold in pairs.



Part No.	Description	Price
8.752-558.0	Link-Lock	\$119

MULTI-PURPOSE WORK RAMP™

Make loading drums a cinch with the Multi-Purpose Work Ramp™. Lightweight and easy to handle, with improved non-skid surface.



Compatible with Job Hut™ or workstations.

Part No.	Description	Price
8.752-557.0	Multi-Purpose Work Ramp™	\$274

GRATES

New grates are available for when contamination occurs or for replacement.



Part No.	Description	Price
8.752-649.0	1-Drum Grates	\$48
8.752-648.0	2-Drum Grates	\$60

FLEXPAL

The versatility of portable containment meets the durability of the classic spill pallet with the all-new Flexpal™. With the accessibility of fabric combined with the strength of rigid pallets, the unique platform design keeps drums out of the spill and allows access to the sump for easy clean-up.



1 Drum Flexpal

Sump Capacity: 38 Gallons
Dims: 25" L x 25" W x 12" H

2 Drum Flexpal

Sump Capacity: 68 Gallons
Dims: 58" L x 25" W x 12" H

4 Drum Flexpal

Sump Capacity: 130 Gallons
Dims: 58" L x 58" W x 12" H

6 Drum Flexpal

Sump Capacity: 195 Gallons
Dims: 82" L x 58" W x 12" H

8 Drum Flexpal

Sump Capacity: 260 Gallons
Dims: 107" L x 58" W x 12" H

Part No.	Description	Price
8.753-038.0	1-Drum Flexpal™	\$250
8.753-039.0	1-Drum Flexpal™ w/Drain	\$262
8.753-040.0	2-Drum Flexpal™	\$348
8.753-041.0	2-Drum Flexpal™ w/Drain	\$371
8.753-042.0	4-Drum Flexpal™	\$521
8.753-043.0	4-Drum Flexpal™ w/Drain	\$545
8.753-044.0	6-Drum Flexpal™	\$736
8.753-045.0	6-Drum Flexpal™ w/Drain	\$760
8.753-046.0	8-Drum Flexpal™	\$883
8.753-047.0	8-Drum Flexpal™ w/Drain	\$907

TARPS

Specifically designed to fit our Spill Containment Products, these reinforced HDPE tarps are used to cover drums stored on spill pallets and IBC's. Tarps prevent contamination of drums and sump area, permit easy visual inspection, and keep rainwater and debris out when stored outdoors.

FEATURES & BENEFITS:

- Quick and easy way to protect from the outdoor elements
- Tarps are made with an elasticized bottom with adjustable straps
- UV-inhibitors resist the effect of weathering
- Constructed of High Density Polyethylene fabric
- Attached document pouch for holding chemical information, MSDS and other documents



POLY-SPILLPALLET 2000

POLY-SPILLPALLET 6000

POLY-DOLLY

POLY-TANK 550

POLY-TANK 275

IBC 2000I

POLY-INLINE 3000

POLY-SLIM-LINE 6000

POLY-TOPS

Part No.	Description	Price
8.752-576.0	Poly-Spillpallet 2000	\$250
8.752-590.0	Poly-Spillpallet 6000	\$286
8.752-584.0	Poly-Dolly	\$250
8.752-599.0	Poly-Tank 550	\$393
8.752-580.0	Poly-Tank 275	\$321
8.752-593.0	IBC 2000I	\$560
8.752-554.0	Poly-Inline Spillpallet 3000	\$286
8.752-545.0	Poly-Slim-Line 6000	\$286
8.752-208.0	Poly-Tops 20 & 30-Gallon	\$83
8.752-209.0	Poly-Tops 65 & 95-Gallon	\$88
8.752-210.0	Poly-Tops 50-Gallon Wheeled	\$88
8.752-211.0	Poly-Tops 95-Gallon Wheeled	\$93
8.752-596.0	Double IBC 4000I	\$595
8.752-566.0	2-Drum Workstation	\$250
8.752-563.0	4-Drum Workstation	\$286

SPILL PALLETS

DRIP DAM LEAK DIVERTER

Available in various and custom sizes, this funnel-style fast-response tool will channel away liquids minimizing the risk of slip-and-fall injuries and contamination.



FEATURES & BENEFITS:

- Made of durable and resistant PVC, the Drip Dam is resistant to water, most chemicals and punctures allowing for reuse and dependability
- Fast & Efficient response to overhead leaks
- Lightweight
- Easy to handle, use, & store
- High chemical resistance
- Flow rate of over 3 gallons per minute
- Reusable & reliable
- Custom size & shapes available
- 3/4" hose bib connection

Custom sizes
available

Part No.	Description	Price
8.752-401.0	3' x 3'	\$50
8.752-402.0	3' x 6'	\$62
8.752-403.0	3' x 10'	\$74
8.752-404.0	5' x 5'	\$67
8.752-405.0	6' x 6'	\$76
8.752-406.0	6' x 10'	\$110
8.752-407.0	6' x 12'	\$121
8.752-408.0	10' x 12'	\$167
8.752-409.0	12' x 12'	\$202
8.752-410.0	12' x 20'	\$343
8.752-411.0	18' x 18'	\$440
8.752-412.0	24' x 24'	\$786

POLY-SPILLPAD

Keep the floors clean with Poly-Spillpad! Handles spent batteries, 5-gallons pails, 16-gallon drums, and the messiest of smaller jobs. Sturdy inner polyethylene grate provides protection while vinyl berm keeps incidental spills contained. Poly-Spillpad is lightweight and easily moved. Great on your plant floors or to prevent incidental spills on the go.



Part No.	Description	Price
8.752-602.0	Medium 24" x 24" x 2"	\$202
8.752-603.0	Large 48" x 24" x 2"	\$321
8.752-604.0	X-Large 48" x 48" x 2"	\$464

POLY-LABTRAY

Poly-Labtray™ reduces spills and overflows of liquid and free-flowing powder chemicals during transfer of material in the laboratory.



Part No.	Description	Price
8.752-571.0	Poly-Labtray	\$83

SPILLPALS

The flexible-sidewall SpillPal line is the easiest to use and the most affordable hazardous material storage product on the market today. SpillPal provides incidental spill control during temporary storage of drum, machine parts, tanks, and generators. It can also be used as a washdown pad. Foam sidewalls that easily spring back into place after any type of pressure is applied. Optional grates available.



Set up is as easy as 1, 2, 3!



1 Drum Spillpal

Sump Capacity: 10 Gallons
Dims: 2" L x 2" W x 3" H

2 Drum Spillpal

Sump Capacity: 15 Gallons
Dims: 2" L x 4" W x 3" H

4 Drum Spillpal

Sump Capacity: 30 Gallons
Dims: 4" L x 4" W x 3" H

4 Drum In-Line Spillpal

Sump Capacity: 30 Gallons
Dims: 4" L x 8" W x 3" H

6 Drum Spillpal

Sump Capacity: 45 Gallons
Dims: 4" L x 6" W x 3" H

8 Drum Spillpal

Sump Capacity: 60 Gallons
Dims: 4" L x 8" W x 3" H

Part No.	Description	Price
8.752-620.0	1-Drum	\$100
8.752-621.0	1-Drum w/ Grates	\$143
8.752-622.0	2-Drum	\$181
8.752-623.0	2-Drum w/ Grates	\$236
8.752-624.0	4-Drum	\$257
8.752-625.0	4-Drum w/ Grates	\$367
8.752-626.0	4-Drum (Inl)	\$314
8.752-627.0	4-Drum (Inl) w/ Grates	\$424
8.752-628.0	6-Drum	\$381
8.752-629.0	6-Drum w/ Grates	\$545
8.752-630.0	8-Drum	\$464
8.752-631.0	8-Drum w Grates	\$683
8.752-648.0	Grates (2 Drum)	\$60
8.752-649.0	Grates (1 Drum)	\$48

ECONO SPILL SHELL

Reduces spills and overflows of liquid and freeflowing powder chemicals during transfer of material in the laboratory.



2-DRUM

Part No.	Description	Price
8.752-546.0	2-Drum Econo Spill Shell	\$190
8.752-547.0	4-Drum Econo Spill Shell	\$226

PORTABLE CONTAINMENT & FLEXIBLES



STINGER YELLOW JACKET

Carry this lightweight, portable pallet anywhere and prevent spills from occurring. Made of vinyl-coated polyester, it is chemical-resistant and stands up to corrosive battery acid. Stop storing truck, automobile, and small forklift batteries on the ground or wooden pallets. Stinger Yellow Jacket™ folds up for compact storage and transport. Unique snap-up support stays create a sturdy sidewall when unit is opened.

Custom sizes available



Optional grates available

Part No.	Description	Price
8.752-613.0	4'L x 4'W x 8"H	\$543
8.752-614.0	6'L x 6'W x 8"H	\$750
8.752-615.0	10'L x 10'W x 8"H	\$955
8.752-616.0	6'L x 4'W x 8"H	\$600
8.752-617.0	8'L x 4'W x 8"H	\$702
8.752-618.0	8'L x 8'W x 8"H	\$990
8.752-619.0	10'L x 8'W x 8"H	\$1,095



Drive in and out without damaging the sidewall!

STINGER SNAP-UP BERM AND SNAP-FOAM BERM

Stinger Snap-Up Berm™ is available in a wide range of sizes and capacities for large-scale spill containment. Features excellent rip, tear, and puncture resistance for the most demanding application or terrain. **Snap-Foam Berm™** allows for continual drive in and out without ever having to set down the end sidewalls.

FEATURES & BENEFITS:

- Easy to assemble snap-up design permits immediate response
- Compact storage and transport
- Air-lance tested containment welds for maximum product performance
- Cold rated to -30°F/-34°C
- Lap joint welds for maximum strength
- Individual serial numbers
- CAD designed and cut components
- Fuel/chemical resistant containment area
- Custom sizes and special materials available



SNAP-FOAM BERM



SNAP-UP BERM

Part No.	Description	Price
8.752-417.0	4'L x 4'W x 8"H	\$674
8.752-418.0	4'L x 4'W x 1'H	\$764
8.752-419.0	4'L x 6'W x 8"H	\$743
8.752-420.0	4'L x 6'W x 1'H	\$879
8.752-421.0	4'L x 8'W x 8"H	\$943
8.752-422.0	6'L x 6'W x 1'H	\$1,062
8.752-423.0	8'L x 8'W x 8"H	\$1,167
8.752-424.0	10'L x 10'W x 1'H	\$1,757
8.752-425.0	12'L x 12'W x 1'H	\$1,907
8.752-426.0	16'L x 16'W x 1'H	\$2,648
8.752-427.0	10'L x 26'W x 1'H	\$2,883
8.752-428.0	12'L x 36'W x 1'H	\$4,164
8.752-429.0	15'L x 50'W x 1'H	\$6,440
8.752-430.0	14'L x 54'W x 1'H	\$6,426
8.752-431.0	12'L x 60'W x 1'H	\$6,981
8.752-432.0	14'L x 66'W x 1'H	\$8,007
8.752-433.0	14'L x 85'W x 1'H	\$10,464
8.752-434.0	10'L x 26'W x 1'H (Snap-Foam)	\$3,317
8.752-435.0	12'L x 36'W x 1'H (Snap-Foam)	\$4,883
8.752-436.0	14'L x 54'W x 1'H (Snap-Foam)	\$6,752
8.752-437.0	12'L x 60'W x 1'H (Snap-Foam)	\$7,055
8.752-438.0	14'L x 85'W x 1'H (Snap-Foam)	\$11,655

Ground Pad, Storage Bag, and TracMat™ provide additional protection.

PORTABLE CONTAINMENT & FLEXIBLES

STINGER SPILLPAL W/REMOVABLE FOAM SIDEWALLS



Removable 4.5" foam sidewalls increase versatility with sturdy construction and a drive in and out feature; Keeping the job moving while not sacrificing safety or compliance. The sidewall design incorporates high strength connectors and a two way air relief system that facilitates automatic entry/exit without assistance.

FEATURES & BENEFITS:

- Meets EPA, SPCC, and NPDES regulations
- Custom sizes and material available
- Ground pad option available
- Trac mat option available
- Storage and Transport bag available
- High Chemical resistance
- Removable foam sidewalls for easy storage and convenience

Part No.	Size	Material	Price
8.752-473.0	12' x 15'	Economy	\$1,412
8.752-474.0		Standard	\$1,936
8.752-475.0		Heavy Duty	\$2,779
8.752-476.0		Ground Pad	\$407
8.752-477.0		TracMat	\$476
8.752-478.0	12' x 20'	Economy	\$1,700
8.752-479.0		Standard	\$2,412
8.752-480.0		Heavy Duty	\$3,524
8.752-481.0		Ground Pad	\$510
8.752-482.0		TracMat	\$595
8.752-483.0	12' x 30'	Economy	\$2,331
8.752-484.0		Standard	\$3,657
8.752-485.0		Heavy Duty	\$5,000
8.752-486.0		Ground Pad	\$764
8.752-487.0		TracMat	\$850
8.752-488.0	12' x 40'	Economy	\$2,636
8.752-489.0		Standard	\$4,252
8.752-490.0		Heavy Duty	\$6,698
8.752-491.0		Ground Pad	\$936
8.752-492.0		TracMat	\$1,021
8.752-493.0	12' x 50'	Economy	\$3,436
8.752-494.0		Standard	\$5,079
8.752-495.0		Heavy Duty	\$8,333
8.752-496.0		Ground Pad	\$1,174
8.752-497.0		TracMat	\$1,293
8.752-498.0	12' x 60'	Economy	\$3,879
8.752-499.0		Standard	\$5,952
8.752-500.0		Heavy Duty	\$9,793
8.752-501.0		Ground Pad	\$1,412
8.752-502.0		TracMat	\$1,617
8.752-503.0	24' x 40'	Economy	\$4,662
8.752-504.0		Standard	\$7,095
8.752-505.0		Heavy Duty	\$11,731
8.752-506.0		Ground Pad	\$1,888
8.752-507.0		TracMat	\$1,021
8.752-508.0	24' x 50'	Economy	\$5,621
8.752-509.0		Standard	\$9,355
8.752-510.0		Heavy Duty	\$15,048
8.752-511.0		Ground Pad	\$2,331
8.752-512.0		TracMat	\$1,293

STINGER SPILLPAL CONT.

Part No.	Size	Material	Price
8.752-513.0	24' x 60'	Economy	\$7,026
8.752-514.0		Standard	\$10,826
8.752-515.0		Heavy Duty	\$18,364
8.752-516.0		Ground Pad	\$2,771
8.752-517.0		TracMat	\$1,617
8.752-518.0	36' x 40'	Economy	\$6,540
8.752-519.0		Standard	\$10,317
8.752-520.0		Heavy Duty	\$17,445
8.752-521.0		Ground Pad	\$2,807
8.752-522.0		TracMat	\$1,021
8.752-523.0	36' x 50'	Economy	\$7,969
8.752-524.0		Standard	\$12,779
8.752-525.0		Heavy Duty	\$21,476
8.752-526.0		Ground Pad	\$3,486
8.752-527.0		TracMat	\$1,293
8.752-528.0	36' x 60'	Economy	\$9,683
8.752-529.0		Standard	\$15,555
8.752-530.0		Heavy Duty	\$25,555
8.752-531.0		Ground Pad	\$4,167
8.752-532.0		TracMat	\$1,617
8.752-533.0	48' x 60'	Economy	\$12,450
8.752-534.0		Standard	\$19,286
8.752-535.0		Heavy Duty	\$32,857
8.752-536.0		Ground Pad	\$5,526
8.752-537.0		TracMat	\$1,617

DRIPILLOW BERM

Comes in four sizes to capture small leaks and drips. With its stable weighted base, it will not flip or splash in windy or harsh weather conditions. Replaceable UV Resistant Pads available for reorder.

FEATURES & BENEFITS:

- No flipping or splashing
- Folds for easy carrying
- Weighted unit can handle 40 mph winds
- Replaceable UV protected pad available



Part No.	Description	Price
8.752-605.0	Small - 22" L X 22" W X 3" H	\$64
8.752-606.0	Medium - 24" L X 36" W X 3" H	\$79
8.752-607.0	Large - 24" L X 54" W X 3" H	\$110
8.752-608.0	X-Large - 38" L X 42" W X 3" H	\$150

REPLACEMENT PADS

Part No.	Description	Price
8.752-609.0	Small - 5/box	\$74
8.752-610.0	Medium - 5/box	\$112
8.752-611.0	Large - 5/box	\$148
8.752-612.0	X-Large - 5/box	\$257

PORTABLE CONTAINMENT & FLEXIBLES

STINGER RAIL BERM

Designed to provide a temporary bermed containment area around the valves below a rail tank car during loading/unloading operations. The berm provides a 4' x 4' x 12" sump area that sits in the void between the tracks directly under the valves.



FEATURES & BENEFITS:

- Outside sump compartment w/ 2" drains that include a male CAM-LOC fitting for quick coupling of system to hoses that can transport the spilled materials.

Part No.	Description	Price
8.752-416.0	Stinger Rail Berm	\$1,417

BERM ACCESSORIES TRACMAT™

Placed inside the berm, Tracmat™ allows trucks to drive in and out while protecting the berm from punctures and tears.



Part No.	Description	Price
8.752-458.0	4'L x 6'W	\$207
8.752-459.0	6'L x 6'W	\$207
8.752-460.0	8'L x 10'W	\$248
8.752-461.0	10'L x 10'W	\$288
8.752-462.0	12'L x 12'W	\$340
8.752-463.0	16'L x 16'W	\$410
8.752-464.0	10'L x 26'W	\$490
8.752-465.0	12'L x 36'W	\$848
8.752-466.0	15'L x 50'W	\$1,236
8.752-467.0	14'L x 54'W	\$1,257
8.752-468.0	12'L x 60'W	\$1,488
8.752-469.0	14'L x 66'W	\$1,536
8.752-470.0	14'L x 85'W	\$1,921

REMOVABLE FOAM LOG

User-friendly removable logs provide excellent protection from harsh chemicals and liquids.

Part No.	Description	Price
8.752-471.0	Removable Foam Log, 64" L x 4.5" W x 4.5" H	\$69
8.752-472.0	Removable Foam Log, 70" L x 4.5" W x 4.5" H	\$69

BERM ACCESSORIES CONT. GROUND PAD

Place under the berm directly on the ground and it will prevent underside punctures from sharp objects.



Part No.	Description	Price
8.752-445.0	4'L x 6'W	\$86
8.752-446.0	6'L x 6'W	\$110
8.752-447.0	8'L x 10'W	\$260
8.752-448.0	10'L x 10'W	\$305
8.752-449.0	12'L x 12'W	\$350
8.752-450.0	16'L x 16'W	\$683
8.752-451.0	10'L x 26'W	\$700
8.752-452.0	12'L x 36'W	\$933
8.752-453.0	15'L x 50'W	\$1,224
8.752-454.0	14'L x 54'W	\$1,340
8.752-455.0	12'L x 60'W	\$1,521
8.752-456.0	14'L x 66'W	\$1,662
8.752-457.0	14'L x 85'W	\$2,050

STORAGE & TRANSPORT BAG

Heavy-duty chemically-resistant bag for ease in maneuverability and storage.



Part No.	Description	Price
8.752-439.0	10'L x 10'W	\$393
8.752-440.0	16'L x 16'W	\$417
8.752-441.0	10'L x 26'W	\$440
8.752-442.0	12'L x 36'W	\$464
8.752-443.0	14'L x 54'W	\$488
8.752-444.0	14'L x 85'W	\$595

PORTABLE CONTAINMENT & FLEXIBLES

BERM REPAIR KITS

STANDARD Berm Repair Kit Contents:

- (5) 8" x 11" Peel & Stick Sheets

DELUXE Berm Repair Kit Contents:

- (1) Leister Professional Heat Gun
- XR material 1 sq. yard (Black)
- PVC material 1 sq. yard (Yellow)
- (4) Replacement Berm Stays
- (5) Peel and Stick Berm Patches
- (1) Rubber Brayer Roller
- (1) Cutting Knife
- (1) Locking Tool Box



STANDARD Berm Repair Kit

DELUXE Berm Repair Kit

Part No.	Description	Price
8.752-413.0	Standard Berm Repair Kit	\$45
8.752-414.0	Deluxe Berm Repair Kit (for 8" sidewalls)	\$1,786
8.752-415.0	Deluxe Berm Repair Kit (for 12" sidewalls)	\$1,786

BAZOOKA TRICKLE FILTER WITH AUTO SHUTOFF

Bazooka is an automated shut off system that allows water drainage of containment berm applications. It utilizes an innovative system for detection of Class I and II organics, such as diesel fuel.



BAZOOKA (shown w/ installation kit)

FEATURES & BENEFITS:

- Trickle filter allows water flow rate of 20 gallons per hour
- Unique Imbibitor Bead Imbibitor pre-filter signals presence of organic substance with a distinct color change
- Imbibitor beads inside capture the organic substance, and by doing so, shut off flow through the filter
- Absorbs and locks up to 2 liters of hydrocarbons
- Flat bottom to prevent rolling and movement

Part No.	Description	Price
8.752-761.0	Bazooka	\$726
8.752-762.0	Bazooka w/ Installation Kit	\$857

PROWLER POOLS

Prowler Pop-up Pools™ offer excellent resistance to the widest range of chemicals, acids, fuels, and other hazardous materials.

They are also resistant to abrasions, punctures, UV Rays, and cold temperatures as low as -60° F.



Part No.	Description	Price
8.752-635.0	Small (20-Gal)	\$102
8.752-637.0	Medium (66-Gal)	\$145
8.752-632.0	Large (100-Gal)	\$155
8.752-636.0	X-Large (150-Gal)	\$167

DUCK PONDS

Duck Ponds are the perfect mini-berm containment for projects where storage space is limited. Small enough to fit in a cabinet or store on a shelf, a Duck Pond can hold various drum sizes with ease and affordability. Providing both reliable and reusable secondary containment for oils, fluids, and gasolines, ponds are easy to maneuver and the perfect quick-grab item that is rugged and ideal for small areas for rapid deployment.



FEATURES & BENEFITS:

- Can withstand extreme cold temperatures to -55°F / -48°C
- Available in various sizes
- Low-profile (4") sidewalls
- Leak tested

GREAT FOR:

- Quick use under leaking vehicles / machines
- Truck / tractor emergency drips
- A low-sidewall pop-up pool alternative
- Changing oils / fluids
- Protecting bottom surfaces while dispensing
- Performing maintenance on any item that has a spill potential

2' x 2' x 4"

Sump Capacity: 10 Gallons
Dims: 2' L x 2' W x 4" H

2' x 3' x 4"

Sump Capacity: 15 Gallons
Dims: 2' L x 3' W x 4" H

2' x 4' x 4"

Sump Capacity: 20 Gallons
Dims: 2' L x 4' W x 4" H

3' x 3' x 4"

Sump Capacity: 22.5 Gallons
Dims: 3' L x 3' W x 4" H

4' x 4' x 4"

Sump Capacity: 40 Gallons
Dims: 4' L x 4' W x 4" H

4' x 6' x 4"

Sump Capacity: 60 Gallons
Dims: 4' L x 6' W x 4" H

Part No.	Description	Price
8.752-971.0	2' x 2' x 4"	\$155
8.752-972.0	2' x 3' x 4"	\$167
8.752-973.0	2' x 4' x 4"	\$190
8.752-974.0	3' x 3' x 4"	\$214
8.752-975.0	4' x 4' x 4"	\$262
8.752-976.0	4' x 6' x 4"	\$286

HAZMAT POOL

Quick deployment pool that is small enough to be stored on any truck or emergency response vehicle. Decontaminate for reuse or discard according to regulations.



Part No.	Description	Price
8.752-633.0	Hazmat Pool	\$155
8.752-634.0	Hazmat Pool w/ Drain	\$214



POLY-DOLLY®

A U-shaped barrel platform and double looped strap make for easy loading. Lightweight design, kick plate, and rolled-grip handles make for easy tipping.

Transports 55-gallon drums with ease, tilts to become an efficient self-dispensing station, and acts as its own secondary containment unit. By reducing unnecessary and dangerous drum handling, Poly-Dolly® protects workers, improves efficiency, and helps improve profits.

- Durable buckle & strap add security and stability
- Drain hole into sump area (hidden in this view) is elevated 1-1/2" above dispensing well for major spills
- Tough Polyethylene construction; will not rust or corrode
- Rolls easily through 36" doorways
- Holds up to 600 lbs
- Lightweight - 126 lbs
- Integrally-molded handle for extra strength
- Rolled-grip handle makes lifting easy
- Transports & dispenses up to 55-gallon drums
- Drain plug simplifies removal of contents from sump
- Extra large, easy roll 10" polyolefin wheels
Wheels do not engage until dolly is upright - makes lifting easier on your back.



Conversion Kit



Well Liner



Tarp



Poly-Dolly® ATD

Part No.	Description	Price
8.752-581.0	Poly-Dolly®	\$740
8.752-582.0	Poly-Dolly® ATD	\$881
8.752-583.0	Poly-Dolly® Conversion Kit	\$226
8.752-642.0	Universal Well Liner	\$71
8.752-584.0	Poly-Dolly® Tarp	\$250

POLY-DOLLY® ATD

Need an even more rugged dolly for outdoor terrain? Poly-Dolly® is available as an All-Terrain Dolly® or can easily be converted into one with our Poly-Dolly Conversion Kit.

Poly-Dolly®
Sump Capacity: 70 Gallons
Handling Capacity: 600 lbs
Dims: 69" L x 31.75" W x 26.5" H



Poly-Dolly® ATD
Sump Capacity: 70 Gallons
Handling Capacity: 600 lbs
Dims: 69" L x 32.5" W x 26.5" H

Note

PRACTICE "GOOD HOUSEKEEPING" WITH OUR RACK SYSTEMS!

THE MINI-RACKER™ SYSTEM

The Mini Racker-Stacker™ System helps save liquids that are routinely lost during the dispensing process and helps protect worker safety by keeping the dispensing area neat and clean.

FEATURES & BENEFITS (Mini-Racker):

- Holds (2) 5-6.5 gallon containers
- Enclosed sump
- Made of 100% polyethylene construction that is UV resistant and chemical resistant
- Can be combined with the mini stacker unit to add an extra level of storage, or separately with another containment solution.

Also available: the Mobile Mini Racker System, which includes the Mini Racker with wheels and a handle for easy transportation throughout the plant. It fits easily through standard doorways.

FEATURES & BENEFITS (Mini-Stacker):

- Holds (2) 5-6.5 gallon containers
- Made of 100% polyethylene construction that is UV resistant and chemical resistant
- Can be combined with the Mini Racker unit to add an extra level of storage, or separately with another containment solution.

Mini-Stacker

Mini-Racker

Mobile Unit - handle flips up

Mini-Stacker
Shown with Workstation (Pg. 6)

Mini-Racker®

Sump Capacity: 8 Gallons
Handling Capacity: 200 lbs
Dims: 31" L x 29" W x 15" H

Mini-Stacker®

Handling Capacity: 100 lbs
Dims: 31" L x 19" W x 18.25" H

Part No.	Description	Price
8.752-645.0	Mini-Racker	\$179
8.752-646.0	Mini-Racker Mobile Unit	\$440
8.752-647.0	Mini-Stacker	\$131

THE POLY-RACK™ SYSTEM

The centerpiece of the Poly-Rack™ System is the Poly-Racker™: a unique one-piece polyethylene rack that holds two (2) 55-gallon drums securely in place. Poly-Stacker™ can quickly be stacked with a forklift. The Poly-Shelf™ easily attaches to a Poly-Stacker™ and allows simultaneous dispensing from all drums. A hole in the bottom of the Poly-Shelf™ drains into the dispensing well in the Poly-Racker™.

Poly-Stacker

Poly-Shelf

Poly-Racker

Part No.	Description	Price
8.752-638.0	Poly-Racker	\$755
8.752-639.0	Poly-Stacker	\$329
8.752-640.0	Poly-Shelf	\$117

SINGLE POLY-RACKER™ SYSTEM

An economical, space-saving solution to storing and dispensing from 55-gallon drums.

FEATURES & BENEFITS:

- Universal Well Line and Poly Shelf
- Allows for stacking of a second 55-gallon drum
- Weight capacity of 1,600 lbs

Sump Capacity: 66 gallons
Dims: 31" L x 40.75" W x 20" H

Poly-Stacker

Poly-Shelf

Poly-Racker

Part No.	Description	Price
8.752-643.0	Single Poly-Racker	\$417
8.752-644.0	Single Poly-Stacker	\$250
8.752-640.0	Poly-Shelf	\$117

MULTI-PURPOSE RACKER/STACKER™

Maximize shop floor space with the Multi-Purpose Racker/Stacker.

FEATURES & BENEFITS:

- Holds (2) 55-gallon drums. The stackable unit allows you to double your efficiency and store up to (4) 55-gallon drums.
- Combine with Poly Slim Line 6000 pallet (PN # 8.752-543.0) to be EPA compliant
- Use with poly shelf (PN #8.752-640.0) for easy dispensing into 5-gallon pails

Part No.	Description	Price
8.752-641.0	Multi-Purpose Racker/Stacker	\$381

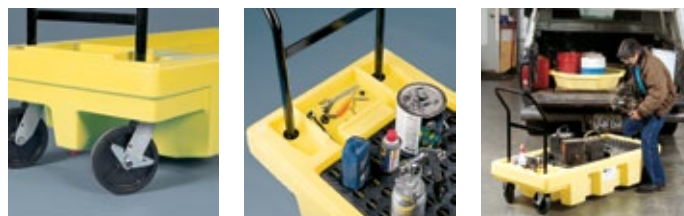
POLY SPILLCART™

Poly-Spillcart™ eliminates the risk of spills during transport with its large sump capacity. Caster wheels let you move around freely while its ergonomically-designed handle makes maneuvering a breeze. A tray for tool storage keeps tools clean and handy. The structural foam grate removes for easy cleaning while the drain plug lets you drain the sump without effort.



Dims: 66.5" L x 29" W x 43.88" H

Part No.	Description	Price
8.752-567.0	Poly-Spillcart	\$917
8.752-568.0	Poly-Spillcart ATC	\$1,071



SPILL SCOOTER™

Provides secondary containment for incidental spills and drips that often occur during vertical dispensing applications. Spills and drips are contained in the well with a spout for easy draining. The Spill Scooter™ fits all drums up to 55 gallons.

FEATURES & BENEFITS:

- Meets secondary containment regulations
- Made of 100% polyethylene will not rust or corrode
- Fits all drums up to 55 gallons



Shown w/ optional T-Handle
(PN #8.752-570.0)

Part No.	Description	Price
8.752-569.0	Spill Scooter	\$207
8.752-570.0	Spill Scooter Handle	\$48

POLY-SPILLCART™ ATC

Available as an All-Terrain Cart or can easily be converted into one with the conversion kit. The ATC's heavy-duty solid rubber wheels and durable axle are designed to handle even the most demanding environments smoothly.



UNIVERSAL WELL LINER

Provides extra spill protection and makes clean-up fast and easy. Used with both racking systems.



Part No.	Description	Price
8.752-642.0	Universal Well Liner	\$71

DISPENSING

QVAC™ 100 & PLUS

Pumps liquid directly into a standard drum for convenient storage or recycling. A liquid overflow shutoff valve ensures vacuum automatically turns off when drum is full. Works on shop air.



Q-VAC 100™



Q-VAC 100™ PLUS
Drum optional, but not included. Spill Scooter included in Plus model.

Part No.	Description	Price
8.752-669.0	QVAC 100	\$821
8.752-668.0	QVAC 100 Plus (includes Spill Scooter)	\$1,024

DRUMS UP™ & DRUMS UP JR™

Drums-Up™ and Drums-Up Jr.™ let you control nuisance spills from drums sized up to 55 gallons. Includes a newly enhanced pour spout. Ideal for use as a drum pumping station.



DRUMS-UP JR.™



Convenient Pour Spout



DRUMS-UP™

Part No.	Description	Price
8.752-666.0	Drums Up (for up to 55-gallon drums)	\$112
8.752-667.0	Drums Up Jr (for 16-gallon drums / 5-gallon pails)	\$83

Note

OUR SECONDARY CONTAINMENT OPTIONS MEET EPA/CFR REGULATIONS!

POLY-TANK™ CONTAINMENT UNITS

Designed for the widely-used 275-gallon obround tank, and the 550-Gallon skid tank, the Poly-Tank Containment Units help protect against hazardous and costly spills and prevent harmful spills from contaminating your yard.



Optional Tarp,
PN 8.752-580.0, See Pg. 7

275-GALLON 82.38"L x 45"W x 35.38"H

Part No.	Description	Price
8.752-577.0	Poly-Tank 275	\$569
8.752-578.0	Poly-Tank 275 w/ Drain	\$607
8.752-580.0	Poly-Tank 275 Tarp	\$321



Optional Tarp,
PN 8.752-599.0, See Pg. 7

550-GALLON 113"L x 71"W x 32"H

Part No.	Description	Price
8.752-597.0	Poly-Tank 550	\$821
8.752-598.0	Poly-Tank 550 w/ Drain	\$857
8.752-599.0	Poly-Tank 550 Tarp	\$393
8.752-600.0	Bulkhead Fitting 3"	\$48



Optional Bulkhead and fittings make pumping and draining simple





POLY-SAFETYPACKS™

This tough, indoor or outdoor performer protects two 55-gallon drums while containing leaks. Drum access and removal is easy with our unique gull-wing covers. Items inside are protected from the weather with our unique slide-over design.

Plus models feature 54.25" inside height, allowing the lids to be closed with the pumps in place to create a versatile pumping station. Convenience meets functionality with its larger 264 gallon capacity. Models with drain available.

FEATURES & BENEFITS:

- 130 gallon sump capacity
- Security locks to secure the covers and contents
- 100% UV/chemical resistant polyethylene
- Translucent sidewalls to view contents inside
- Forkliftable
- Optional drain available



POLY-SAFETYPACK

Poly-Safetypack®

Sump Capacity: 130 Gallons
Handling Capacity: 1200 lbs
Dims Ext: 60.5" L X 37.25" W X 45.75" H
Dims Int: 52.37" L X 26.25" W X 37" H



POLY-SAFETYPACK PLUS

"Plus" model
allows pump to
stay in place

Poly-Safetypack® Plus

Sump Capacity: 264 Gallons
Handling Capacity: 1200 lbs
Dims Ext: 60.25" L X 34.13" W X 64" H
Dims Int: 51.25" L X 26.25" W X 54.25" H

Part No.	Description	Price
8.752-361.0	Poly-Safetypack	\$1,012
8.752-362.0	Poly-Safetypack w/ Drain	\$1,036
8.752-363.0	Poly-Safetypack Plus	\$1,179
8.752-364.0	Poly-Safetypack Plus w/ Drain	\$1,190

LARGE & EXTRA-LARGE TOTES

Totes are the only stackable, nestable, forkliftable, water resistant, mobile totes on the market. Available in two sizes: large and extra-large. Both offer a 500 lb handling capacity. Molded from FDA approved material. Combo includes: Lid with handles and either 4" polyurethane wheels or 8" solid rubber wheels.



Shown with 8" Wheels

Large Tote

Sump Capacity: 123 Gallons
Handling Capacity: 500 lbs
Dims Ext: 45" L X 35.5" W X 30.37" H
Dims Int: 34" L X 25" W X 24.25" H

Extra-Large Tote

Sump Capacity: 223 Gallons
Handling Capacity: 500 lbs
Dims Ext: 51.5" L X 47.25" W X 33" H
Dims Int: 42.5" L X 37" W X 28" H

Part No.	Description	Price
8.752-349.0	Large Tote w/ Lid	\$426
8.752-350.0	Large Tote w/ Lid & 4" Wheels	\$757
8.752-351.0	Large Tote w/ Lid & 8" Wheels	\$948
8.752-347.0	Large Tote Bin (no lid)	\$243
8.752-348.0	Lid for Large Tote Bin	\$183
8.752-355.0	X-Large Tote w/ Lid	\$519
8.752-356.0	X-Large Tote w/ Lid & 4" Wheels	\$855
8.752-357.0	X-Large Tote w/ Lid & 8" Wheels	\$1,043
8.752-353.0	X-Large Tote Bin (no lid)	\$305
8.752-354.0	Lid for X-Large Tote Bin	\$217
8.752-352.0	4" Polyurethane Wheel Kit	\$226
8.752-358.0	8" Solid Rubber Wheel Kit	\$393

HAZARD HUT

One-piece molded 100% polyethylene construction means there are no joints or seams to leak. Molded-in side vents reduce fumes, while UV protection makes it a durable performer outside. Removable grates make it easy to clean and the 72-gallon sump capacity ensures leak and spill containment.

FEATURES & BENEFITS:

- Double lockable doors
- Handles up to (4) 55 gal drums
- Four – way forkliftable

Sump Capacity: 72 Gallons
Handling Capacity: 4000 lbs

Dims Ext: 63.5" L X 68" W X 72.5" H
Dims Int: 53.75" L X 53.75" W X 52.25" H



HAZARD HUT POLY-RAMP

Part No.	Description	Price
8.752-378.0	Hazard Hut	\$2,369
8.752-379.0	Hazard Hut Poly-Ramp	\$821

STORAGE

JOB HUT™

An extra large storage area lets you store up to eight 55-gallon drums right on their pallets! Its low profile design allows for easy access, and it's forkliftable from all sides for effortless handling.

The Job Hut™ offers substantial savings when compared to similar metal or concrete storage buildings, while providing superior performance.

The optional ramp facilitates loading your drums into the unit.

FEATURES & BENEFITS:

- 100% polyethylene with UV inhibitors for increased durability
- Three removable structural foam grates hold 8,000 lbs handling capacity weight
- Low profile design allows for easy access. Extra-wide 57" x 78" doorway allows for easy forklift entry
- 4-way forkliftable design for ease in handling
- Two heavy-duty, double-walled doors for added security
- Built-in 72-gallon sump capacity



Sump Capacity: 72 Gallons
Handling Capacity: 8000 lbs

Dims Ext: 85.6" L X 61.5" W X 94 H"
Dims Int: 70" L X 51" W X 82 H"

Part No.	Description	Price
8.752-380.0	Job Hut	\$4,688
8.752-557.0	Multi-Purpose Work Ramp	\$274



Foam grates remove for easy cleaning



Tie-down Feature



Work Ramp

POLY-EDGE

The lockable, large capacity unit offers storage for tools and absorbents as well as Stinger Berms and Prowler Pools.

FEATURES & BENEFITS:

- Will not rust or corrode
- Constructed of lightweight 100% polyethylene
- Slotted footprint makes mounting easy
- A special weather and water-resistant gasket keeps stored items dry
- Available in black and yellow



Handling Capacity: 7500 lbs
Dims: 35" L x 20" W x 16" H

Part No.	Description	Price
8.752-360.0	Poly-Edge (yellow)	\$179
8.752-359.0	Poly-Edge (black)	\$179

See pages 5&6 for our Poly-Spill Pallet Hardcover options

IBC-2000I

Integrated IBC 2000i gives intermediate bulk container users more versatile spill containment. It comes with an integrated 5-gallon pail holder for quick and easy dispensing.

The IBC 2000iTM is the only one-piece, light weight, 100% polyethylene IBC spill containment unit that is forkliftable and nestable for convenient shipment and storage and it reduces shipping costs.

FEATURES & BENEFITS:

- Grates on the center pedestal offer skid resistance and facilitate loading
- Integrated pail holder for quick and easy dispensing
- Features a large sump capacity of 385 gallons, exceeding
- EPA 40 CFR 264.175 regulations
- Nestable
- Removable grates for easy clean up
- The unit's 8,000 lbs load capacity allows two IBC's to be safely stacked on top of the sump.
- Forklift channels for easy transport of empty containment device



Typical installations for IBC tank

Part No.	Description	Price
8.752-591.0	IBC 2000i	\$1,821
8.752-592.0	IBC 2000i w/ Drain	\$1,857
8.752-593.0	IBC 2000i Tarp	\$560

Sump Capacity: 385 Gallons
Handling Capacity: 8000 lbs

Dims Ext: 73" L X 80.5" W X 29.5 H"
Dims Ped: 56.75" L X 56.75" W X 29.5 H"

DOUBLE IBC 4000I

With 12 heavy-duty removable and stackable grates, you will save on freight while not sacrificing quality and durability. With over a 750 gallon sump capacity, the wide platform shelf accepts two IBC units and holds up to a 10,000 pound handling capacity.

FEATURES & BENEFITS:

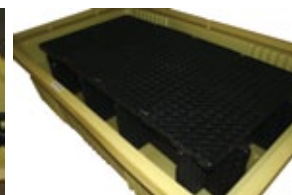
- 100% polyethylene
- UV and chemical resistance
- 4 way forkliftable and nestable for convenient shipping and storage
- Link and Lock grate design enhances stability



See page 9 for optional protective tarps



EASY AS 1, 2, 3!



3 LOAD

Sump Capacity: 750 Gallons
Handling Capacity: 10,000 lbs

Dims Ext: 113" L X 72" W X 32 H"

Part No.	Description	Price
8.752-594.0	Double IBC 4000i	\$2,262
8.752-595.0	Double IBC 4000i w/ Drain	\$2,310
8.752-596.0	IBC 4000i Tarp	\$595

1 SNAP

2 RACK

STORAGE

POLY-COLLECTOR™ 66 & 110

The Poly Collector (Portable Hazardous Materials Collection System) puts mobility into containment so you can go where the waste is. These drum dolly mounted containers are built tough from UV- stabilized polyethylene for excellent chemical resistance to a broad range of industrial materials.



Poly-Collector™ 66
The Indoor System

FEATURES & BENEFITS:

- Universal Poly-Drum Funnel™ included
- Inner drum holds 55 gallons
- Poly outer shell holds 66 gallons (Poly-Collector™ 66)
- Poly outer shell holds 103 gallons (Poly-Collector™ 110)
- Drum Dolly included



Poly-Collector™ 110
The Outdoor System

Part No.	Description	Price
8.752-660.0	Poly-Collector 66 w/ Steel Drum	\$607
8.752-661.0	Poly-Collector 66 w/ Poly Drum	\$667
8.752-665.0	Poly-Collector 110 w/ Steel Drum	\$690
8.752-664.0	Poly-Collector 110 w/ Poly Drum	\$750
8.752-663.0	Poly-Collector 66 Shell Only	\$214
8.752-662.0	Drum Dolly	\$179

	Poly-Collector™ 66	Poly-Collector™ 110
Handling Capacity	600 lbs	600 lbs
Drum Size	up to 55 gallons	up to 55 gallons
Sump Capacity	70 gallons	103 gallons
Exterior Dimensions	32.5" L x 32.5" W x 42.5" H	31.75" L x 31.75" W x 49" H



OIL ONLY, AGGRESSIVE & UNIVERSAL SPILL KITS

Our Spill Kits contain everything needed to safely and effectively clean up any hazardous spill. These highly visible containers keep spill response products readily available so you can avoid a costly problem. Complete with protective gear and a wide range of sorbent tools, these kits will stand up to the challenge.

See page 28 for
Spill Kit Refills

SPILL KIT COMPATIBILITY:

- **Oil Only Spill Kits (white):** For Oil Only (Does Not Absorb Water)
- **Universal Spill Kits (gray):** For Oils, Water, Coolants, Solvents, & More
- **Aggressive Spill Kits (yellow):** For Acids, Bases & Unknown Liquids



20-Gallon Spill Kits

Each kit contains:

- 1 (20-gal) Salvage Drum
- 1 (1-gal) Jug of ENSORB®
- 20 Pads
- 1 Large Sock
- 6 Medium Socks
- 1 Pack Wipers
- 2 Disposal Bags w/ Ties
- 1 Pair Nitrile Gloves
- 1 Pair Safety Goggles
- 1 Emergency Response Guide
- 1 Instruction Sheet and MSDS

Absorbs up to 11-gal (42 liters)



30-Gallon Spill Kits

Each kit contains:

- 1 (30-gal) Salvage Drum
- 1 (1-gal) Jug of ENSORB®
- 50 Pads
- 2 Large Sock
- 6 Medium Socks
- 1 Pack Wipers
- 2 Disposal Bags w/ Ties
- 1 Pair Nitrile Gloves
- 1 Pair Safety Goggles
- 1 Emergency Response Guide
- 1 Instruction Sheet and MSDS

Absorbs up to 23-gal (87 liters)



65-Gallon Spill Kits

Each kit contains:

- 1 (65-gal) Salvage Drum
- 1 (1-gal) Jug of ENSORB®
- 50 Pads
- 8 Large Sock
- 12 Medium Socks
- 1 Pack Wipers
- 4 Disposal Bags w/ Ties
- 2 Pair Nitrile Gloves
- 2 Pair Safety Goggles
- 1 Emergency Response Guide
- 1 Instruction Sheet and MSDS

Absorbs up to 41-gal (155 liters)

Part No.	Description	Price
8.752-283.0	Oil Only	\$202
8.752-279.0	Universal	\$202
8.752-281.0	Aggressive	\$250

Part No.	Description	Price
8.752-289.0	Oil Only	\$274
8.752-285.0	Universal	\$274
8.752-287.0	Aggressive	\$333

Part No.	Description	Price
8.752-321.0	Oil Only	\$583
8.752-317.0	Universal	\$583
8.752-319.0	Aggressive	\$755

SPILL KITS

OIL ONLY, AGGRESSIVE & UNIVERSAL SPILL KITS (CONT.)



95-Gallon Spill Kits

Each kit contains:

- 1 (95-gal) Salvage Drum
- 1 (1-gal) Jug of ENSORB®
- 100 Pads
- 10 Large Sock
- 16 Medium Socks
- 1 Pack Wipers
- 5 Disposal Bags w/ Ties
- 2 Pair Nitrile Gloves
- 2 Pair Safety Goggles
- 1 Emergency Response Guide
- 1 Instruction Sheet and MSDS

Absorbs up to 62-gal (235 liters)

Part No.	Description	Price
8.752-333.0	Oil Only	\$679
8.752-329.0	Universal	\$679
8.752-331.0	Aggressive	\$869



95-Gallon EnviroSalv Locking Spill Kits

Each kit contains:

- 1 (95-gal) Salvage Drum
- 1 (1-gal) Jug of ENSORB®
- 100 Pads
- 10 Large Sock
- 16 Medium Socks
- 1 Pack Wipers
- 5 Disposal Bags w/ Ties
- 2 Pair Nitrile Gloves
- 2 Pair Safety Goggles
- 1 Emergency Response Guide
- 1 Instruction Sheet and MSDS

Absorbs up to 62-gal (235 liters)

Part No.	Description	Price
8.752-339.0	Oil Only	\$738
8.752-335.0	Universal	\$738
8.752-337.0	Aggressive	\$929



Locking Mechanism



95-Gallon Eco Spill Kits

Each kit contains:

- 1 (95-gal) Salvage Drum
- 1 (1-gal) Jug of ENSORB®
- 100 Pads
- 10 Large Sock
- 16 Medium Socks
- 1 Pack Wipers
- 5 Disposal Bags w/ Ties
- 2 Pair Nitrile Gloves
- 2 Pair Safety Goggles
- 1 Emergency Response Guide
- 1 Instruction Sheet and MSDS

Absorbs up to 62-gal (235 liters)

Eco Spill Kit Container made from recycled material!

Part No.	Description	Price
8.752-979.0	Oil Only	\$645
8.752-977.0	Universal	\$645
8.752-978.0	Aggressive	\$826

See page 28 for Spill Kit Refills



50-Gallon Wheeled Spill Kits

Each kit contains:

- 1 (50-gal) Salvage Drum
- 1 (1-gal) Jug of ENSORB®
- 40 Pads
- 5 Large Sock
- 10 Medium Socks
- 1 Pack Wipers
- 4 Disposal Bags w/ Ties
- 2 Pair Nitrile Gloves
- 2 Pair Safety Goggles
- 1 Emergency Response Guide
- 1 Instruction Sheet and MSDS

Absorbs up to 31-gal (117 liters)

Part No.	Description	Price
8.752-315.0	Oil Only	\$490
8.752-311.0	Universal	\$490
8.752-313.0	Aggressive	\$638



95-Gallon Wheeled Spill Kits

Each kit contains:

- 1 (95-gal) Salvage Drum
- 1 (1-gal) Jug of ENSORB®
- 100 Pads
- 10 Large Sock
- 16 Medium Socks
- 1 Pack Wipers
- 5 Disposal Bags w/ Ties
- 2 Pair Nitrile Gloves
- 2 Pair Safety Goggles
- 1 Emergency Response Guide
- 1 Instruction Sheet and MSDS

Absorbs up to 62-gal (235 liters)

Part No.	Description	Price
8.752-345.0	Oil Only	\$750
8.752-341.0	Universal	\$750
8.752-343.0	Aggressive	\$940

LARGE & EXTRA LARGE TOTE SPILL KITS



Large Tote

X-Large Tote

Large Tote contains:

- 1 Large Tote w/ 4" wheel set
- 150 Pads
- 10 Large Socks
- 30 Medium Socks
- 1 (1.5 cubic ft) Bag of ENSORB®
- 1 Pack Wipers
- 15 Disposal Bags w/ Ties
- 2 Pair Nitrile Gloves
- 2 Pair Safety Goggles
- 1 Emergency Response Guide
- 1 Instruction Sheet and MSDS

Absorbs up to 95-gal (360 liters)

X-Large Tote contains:

- 1 Large Tote w/ 4" wheel set
- 200 Pads
- 18 Large Socks
- 60 Medium Socks
- 1 (1.5 cubic ft) Bag of ENSORB®
- 1 Pack Wipers
- 20 Disposal Bags w/ Ties
- 2 Pair Nitrile Gloves
- 2 Pair Safety Goggles
- 1 Emergency Response Guide
- 1 Instruction Sheet and MSDS

Absorbs up to 150-gal (568 liters)

Part No.	Description	Price
8.752-309.0	Large Tote Spill Kit - Oil Only	\$1,250
8.752-305.0	Large Tote Spill Kit - Universal	\$1,250
8.752-307.0	Large Tote Spill Kit - Aggressive	\$1,443
8.752-327.0	X-Large Tote Spill Kit - Oil Only	\$1,902
8.752-323.0	X-Large Tote Spill Kit - Universal	\$1,902
8.752-325.0	X-Large Tote Spill Kit - Aggressive	\$2,250

WALL MOUNT SPILL LOCKERS

Keep your Spill Kits at eye level with Spill Lockers. Loaded with everything you will need to absorb your Spills, from factory floors to utility kitchens. Two sizes and refills available.



Each Large Kit Contains:

- 1 Wall Locker
- 1 (1-gal) Jug of ENSORB®
- 25 Pads
- 4 Pillows
- 4 Medium Socks
- 1 Pack Wipers
- 1 Pair Nitrile Gloves
- 1 Pair Safety Goggles
- 4 Disposal Bags w/ Ties
- Hand Seal
- 1 Emergency Response Guide
- Instruction Sheet and MSDS(s)

Absorbs up to 15-gal (56.8 liters)

Each X-Large Kit Contains:

- 1 Wall Locker
- 1 (1-gal) Jug of ENSORB®
- 50 Pads
- 6 Pillows
- 7 Medium Socks
- 1 Pack Wipers
- 2 Pair Nitrile Gloves
- 2 Pair Safety Goggles
- 4 Disposal Bags w/ Ties
- Hand Seal
- 1 Emergency Response Guide
- Instruction Sheet and MSDS(s)

Absorbs up to 25-gal (94.6 liters)

Part No.	Description	Price
8.752-240.0	Large Wall Mount Spill Locker - Oil Only	\$417
8.752-236.0	Large Wall Mount Spill Locker - Universal	\$417
8.752-238.0	Large Wall Mount Spill Locker - Aggressive	\$452
8.752-246.0	X-Large Wall Mount Spill Locker - Oil Only	\$476
8.752-242.0	X-Large Wall Mount Spill Locker - Universal	\$476
8.752-244.0	X-Large Wall Mount Spill Locker - Aggressive	\$524

MULTI-RESPONDER SHT SPILL KITS SERIOUSLY HAZARDOUS AND TOXIC

Dealing with Seriously Hazardous and Toxic materials? Look no further! The most extreme weapon when it comes to fighting spills. Complete with the widest range of sorbent tools and protective gear, these kits will stand up to your biggest, toughest, dirtiest challenge.



Each 30-Gal Kit Contains:

- 1 P.P.E Spill Pak
- 1 (1-gal) Jug of ENSORB®
- 1 (500-gram) Bag Chemkrenz®
- 1 Hand Carried Universal Spill Kit
- 1 Hand Carried Aggressive Spill Kit
- 1 Hand Carried Oil Only Spill Kit
- 1 Leak Repair Kit
- 1 (20-gal) Prowler® Pool
- 1 Caution Sign

Absorbs up to 39-gal (148 liters)

Each 50-Gal Kit Contains:

- 1 P.P.E Spill Pak
- 1 (1-gal) Jug of ENSORB®
- 1 (500-gram) Bag Chemkrenz®
- 1 Hand Carried Universal Spill Kit
- 1 Hand Carried Aggressive Spill Kit
- 1 Hand Carried Oil Only Spill Kit
- 1 Leak Repair Kit
- 1 (20-gal) Prowler® Pool
- 1 Caution Sign

Absorbs up to 39-gal (148 liters)

Each 95-Gal Kit Contains:

- 1 P.P.E Spill Pak
- 1 (1-gal) Jug of ENSORB®
- 3 (1-qt) bags of ENSORB®
- 1 Shaker Chemkrenz®
- 1 Speedy Duffel Universal Spill Kit
- 1 Speedy Duffel Aggressive Spill Kit
- 1 Speedy Duffel Oil Only Spill Kit
- 1 Leak Repair Kit
- 1 (20-gal) Prowler® Pool
- 1 Caution Sign
- 1 Collapsible Shovel
- 1 Dustpan Combo

Absorbs up to 51-gal (193 liters)

- 1 Collapsible Shovel
- 1 Dustpan Combo
- 1 Broom Head
- 1 Telescoping Handle
- 45 Pads
- 6 Medium Socks
- 6 Pair Nitrile Gloves
- 3 Pair Safety Goggles
- 9 Disposal Bags w/ Ties

- 1 Collapsible Shovel
- 1 Dustpan Combo
- 1 Broom Head
- 1 Telescoping Handle
- 45 Pads
- 6 Medium Socks
- 6 Pair Nitrile Gloves
- 3 Pair Safety Goggles
- 9 Disposal Bags w/ Ties

- 1 Broom Head
- 1 Telescoping Handle
- 60 Pads
- 9 Medium Socks
- 6 Pair Nitrile Gloves
- 6 Pair Safety Goggles
- 6 Disposal Bags w/ Ties

See page 28 for
Spill Kit Refills

Part No.	Description	Price
8.752-248.0	30-Gal Multi-Responder SHT Kit	\$881
8.752-249.0	50-Gal Wheeled Multi-Responder SHT Kit	\$1,083
8.752-250.0	95-Gal Multi-Responder SHT Kit	\$1,298
8.752-251.0	95-Gal ECO Multi-Responder SHT Kit	\$1,298
8.752-252.0	95-Gal Wheeled Multi-Responder SHT Kit	\$1,369

SPILL KITS

ENSORB® SPILL STATIONS & VEHICLE SPILL KITS

Each Spill Station Contains:

- 1 Wire Rack
- 1 (1-gal) Jug of ENSORB®
- 10 Trash Bags
- 1 Dustpan
- 1 Hand Broom
- 1 Universal Spill Kit Sticker
- 1 MSDS

Absorbs up to 1-gal (3.8 liters)



Ensorb Spill Station

Each Spill Station DELUXE Contains:

- 1 Wire Rack
- 1 (1-gal) Jug of ENSORB®
- 50 Trash Bags
- 1 Box Latex Gloves
- 1 Dustpan
- 1 Hand Broom
- 1 Universal Spill Kit Sticker
- 1 Caution Sign
- 1 Telescoping Broom Handle
- 1 Broom Head
- 1 MSDS

Absorbs up to 1-gal (3.8 liters)



Ensorb Spill Station DELUXE

Each Super Absorbent Spill Kit Contains:

- 1 Water Resistant Nylon Zippered Tote
- 2 (1-gal) Jug of ENSORB®
- 1 Broom Head
- 1 Telescoping Broom Handle
- 1 Dustpan / Brush Combo
- 10 Disposal Bags w/ Ties
- 1 Pair Safety Goggles
- 1 Pair Nitrile Gloves

Absorbs up to 2-gal (7.6 liters)



Ensorb Super Absorbent Spill Kit

Part No.	Description	Price
8.752-217.0	ENSORB® Spill Station	\$107
8.752-218.0	ENSORB® Spill Station Deluxe	\$214
8.752-219.0	ENSORB® Super Absorbent Spill Kit	\$155

ECONO SAFETY PAIL SPILL KITS

Looking for portability and value? You found it. The perfect spill kit for everyday economic applications.

Each Safety Pail Kit Contains:

- 1 (1-qt) Zip Bag ENSORB®
- 1 Pair Nitrile Gloves
- 1 Pair Safety Goggles
- 1 Disposal Bag w/ Tie
- 1 Emergency Response Guide
- 1 Instruction Sheet

Absorbs up to 5-gal (19 liters)



Part No.	Description	Price
8.752-229.0	Econo Safety Pail Spill Kit - Oil Only	\$86
8.752-228.0	Econo Safety Pail Spill Kit - Universal	\$86

CHEMKLENZ NEUTRALIZING SPILL KITS

Nasty spill? You can never be too safe when dealing with unknown chemicals and liquids. Be armed with Chemklenz® Neutralizing Kits! Fully ready to tackle your meanest of spills, Chemklenz® Nano technology makes it the market's leading Absorbent and Neutralizer for acids, bases, caustics, solvents and more.

Each X1 Kit Contains:

- 1 (500-gram) ChemKlenz® Granule Bag
- 1 Disposal Bag w/ Tie
- 1 Pair Safety Goggles
- 1 Pair Nitrile Gloves
- 1 Dustpan w/ Brush
- 1 Clear Zipper Bag

Absorbs up to 1-liter



Chemklenz X1

Each X5 Kit Contains:

- 2 (500-gram) ChemKlenz® Granule Bag
- 2 Disposal Bags w/ Ties
- 1 Pair Safety Goggles
- 1 Pair Nitrile Gloves
- 1 Dustpan w/ Brush
- 1 Fast Pack Bag
- 5 Pads
- 2 Medium Socks
- 1 Red Demand Seal

Absorbs up to 5-gal (10 liters)



Chemklenz X5

Each X10 Kit Contains:

- 2 (750-gram) ChemKlenz® Granule Shaker
- 4 Disposal Bags w/ Ties
- 1 Pair Safety Goggles
- 1 Pair Nitrile Gloves
- 1 Dustpan w/ Brush
- 1 Speed Duffel Bag
- 20 Pads
- 3 Medium Socks
- 2 Large Socks
- 1 Red Demand Seal

Absorbs up to 10-gal (37.9 liters)



Chemklenz X10

Part No.	Description	Price
8.752-253.0	Chemklenz X1 Spill Kit	\$226
8.752-254.0	Chemklenz X5 Spill Kit	\$452
8.752-255.0	Chemklenz X10 Spill Kit	\$643

FORKLIFT / VEHICLE SPILL KITS

The spill kits contents are contained in an extremely durable water resistant safety yellow bag. Easily hangs from any piece of heavy equipment such as a forklift.

Each Forklift / Vehicle Kit Contains:

- 12 Pads
- 2 Socks
- 1 Pair Nitrile Gloves
- 1 Disposal Bag w/ Tie
- 1 Instruction Sheet

Absorbs up to 5-gal (19 liters)



Part No.	Description	Price
8.752-226.0	Forklift/Vehicle Spill Kit - Oil Only	\$136
8.752-227.0	Forklift/Vehicle Spill Kit - Universal	\$136

FAST PACKS & SPEEDY DUFFELS

Compact and portable vehicle response kits for small transportation spills in yellow water-resistant, heavy-duty nylon bags. Convenient nylon handles and straps provide easy transport and response. Great for fueling locations!



Speedy Duffel Fast Pack

Each Fast Pack Kit Contains:

- 1 (1-qt) Zip Bag ENSORB®
- 1 Heavy-Duty Duffel
- 10 Pads
- 2 Medium Socks
- 1 Pair Nitrile Gloves
- 1 Disposal Bag w/ Tie
- 1 Emergency Response Guide
- 1 Instruction Sheet and MSDS(s)

Absorbs up to 5-gal (19 liters)

Each Speedy Duffel Kit Contains:

- 1 (1-qt) Zip Bag ENSORB®
- 1 Heavy-Duty Duffel
- 20 Pads
- 2 Large Socks
- 3 Medium Socks
- 1 Pair Nitrile Gloves
- 1 Pair Safety Goggles
- 1 Disposal Bag w/ Tie
- 1 Emergency Response Guide
- 1 Instruction Sheet and MSDS(s)

Absorbs up to 10-gal (38 liters)

Part No.	Description	Price
8.752-262.0	Fast Pack Spill Kit - Oil Only	\$93
8.752-256.0	Fast Pack Spill Kit - Universal	\$93
8.752-259.0	Fast Pack Spill Kit - Aggressive	\$117
8.752-273.0	Speedy Duffel Spill Kit - Oil Only	\$157
8.752-265.0	Speedy Duffel Spill Kit - Universal	\$157
8.752-269.0	Speedy Duffel Spill Kit - Aggressive	\$198

*Also available in Woodland Camouflage and Desert Tan Camouflage - call for details.

LONG HAUL TRUCK SPILL KIT

The Deluxe & Econo Long Haul Truck Spill Kits can be used as truck-mounted carriers under semi-trucks/trailers or as a spill response unit in almost any location.



Each Long Haul Truck Kit Contains:

- 1 (1-qt) Zip Bag ENSORB®
- 1 (20-gal) Prowler Pop-Up Pool
- 10 Pads
- 4 Medium Socks
- 1 Pair Safety Goggles
- 1 Pair Nitrile Gloves
- 1 Disposal Bag w/ Tie
- 1 Emergency Response Guide

Absorbs up to 25-gal (94.6 liters)



Each DELUXE Long Haul Truck Kit Contains:

- 1 Poly-Edge™ Mountable (lockable) Storage Container
- 1 (1-gal) Jug ENSORB®
- 1 (100-gal) Prowler Pop-Up Pool
- 1 Leak Repair Kit
- 25 Pads
- 4 Medium Socks
- 1 Pair Safety Goggles
- 1 Pair Nitrile Gloves
- 2 Disposal Bags w/ Ties
- 1 Emergency Response Guide
- 1 Instruction Sheet

Absorbs up to 110-gal (416.4 liters)

Part No.	Description	Price
8.752-231.0	Econo Long Haul Truck Spill Kit - Oil Only	\$167
8.752-230.0	Econo Long Haul Truck Spill Kit - Universal	\$167
8.752-232.0	Deluxe Long Haul Truck Spill Kit - Oil Only	\$512
8.752-234.0	Deluxe Long Haul Truck Spill Kit - Universal	\$512

ECONO™ SPILL PAK

Perfect for stashing behind the seat of a truck or placing in a stuff box. This kit can be refilled, but it's so economical, we feel it's disposable!



Each Kit Contains:

- 1 Spill Pak Bag
- 3 Medium Socks
- 1 Disposal Bag w/ Tie
- 12 Pads
- 1 Pair Nitrile Gloves
- 1 Instruction Sheet
- 1 MSDS

Part No.	Description	Price
8.752-220.0	Econo Spill Pak - Oil Only	\$48
8.752-222.0	Econo Spill Pak - Universal	\$48
8.752-221.0	Econo Spill Pak - Aggressive	\$52

HAND CARRIED SPILL KIT

Need Spill Response on the go? This Hand Carried Kit is quick and efficient for your unplanned spills!



Each Kit Contains:

- 1 Spill Pak Bag
- 15 Pads
- 2 Medium Socks
- 2 Disposal Bags w/ Ties
- 1 Pair Nitrile Gloves
- 1 Instruction Sheet
- 1 MSDS

Part No.	Description	Price
8.752-225.0	Hand Carried Spill Kit - Oil Only	\$52
8.752-223.0	Hand Carried Spill Kit - Universal	\$52
8.752-224.0	Hand Carried Spill Kit - Aggressive	\$57

FUEL LEAK REPAIR KIT

The Leak Repair Kit can be used to plug leaking gasoline, diesel or biofuel tanks to minimize the amount of fuel lost and the clean up required.



Each Leak Repair Kit Contains:

- 1 Plug Pattie
- 1 Aluminum Butyl Tape
- 1 Super Absorbent Pad
- 1 Rubber Barrier Sheet
- 2 Zip Ties
- 1 Pair Nitrile Gloves

Part No.	Description	Price
8.752-216.0	Leak Repair Kit	\$48

See page 28 for
Spill Kit Refills

SPILL KIT ACCESSORIES



REPLACEMENT & REFILL KITS

Purchase a Refill Kit to keep your container ready for immediate spill response. Call for details.



Part No.	Description	Price
8.752-280.0	20-Gallon - Universal	\$155
8.752-282.0	20-Gallon - Aggressive	\$190
8.752-284.0	20-Gallon - Oil Only	\$155
8.752-286.0	30-Gallon - Universal	\$202
8.752-288.0	30-Gallon - Aggressive	\$238
8.752-290.0	30-Gallon - Oil Only	\$202
8.752-312.0	50-Gallon Wheeled - Universal	\$395
8.752-314.0	50-Gallon Wheeled - Aggressive	\$526
8.752-316.0	50-Gallon Wheeled - Oil Only	\$395
8.752-318.0	65-Gallon - Universal	\$417
8.752-320.0	65-Gallon - Aggressive	\$540
8.752-322.0	65-Gallon - Oil Only	\$417
8.752-342.0	95-Gallon Wheeled - Universal	\$464
8.752-344.0	95-Gallon Wheeled - Aggressive	\$679
8.752-346.0	95-Gallon Wheeled - Oil Only	\$464
8.752-336.0	95-Gallon Envirosolv - Universal	\$488
8.752-338.0	95-Gallon Envirosolv - Aggressive	\$679
8.752-340.0	95-Gallon Envirosolv - Oil Only	\$488

Part No.	Description	Price
8.752-330.0	95-Gallon - Universal	\$464
8.752-332.0	95-Gallon - Aggressive	\$655
8.752-334.0	95-Gallon - Oil Only	\$464
8.752-306.0	Large Tote - Universal	\$679
8.752-308.0	Large Tote - Aggressive	\$810
8.752-310.0	Large Tote - Oil Only	\$679
8.752-324.0	X-Large Tote - Universal	\$1,083
8.752-326.0	X-Large Tote - Aggressive	\$1,321
8.752-328.0	X-Large Tote - Oil Only	\$1,083
8.752-235.0	Long Haul Deluxe - Universal	\$381
8.752-233.0	Long Haul Deluxe - Oil Only	\$381
8.752-237.0	Wall Mount Locker Large - Universal	\$179
8.752-239.0	Wall Mount Locker Large - Aggressive	\$214
8.752-241.0	Wall Mount Locker Large - Oil Only	\$179
8.752-243.0	Wall Mount Locker X-Large - Universal	\$238
8.752-245.0	Wall Mount Locker X-Large - Aggressive	\$286
8.752-247.0	Wall Mount Locker X-Large - Oil Only	\$238

POLY-TOPS

Poly-top prevents the accumulation of water, snow, dirt and debris on overpack lids while protecting overpacks against weathering and long-term UV degradation.



Part No.	Description	Price
8.752-208.0	20 & 30-Gal Poly-Top	\$83
8.752-210.0	50-Gal Wheeled Poly-Top	\$88
8.752-209.0	65 & 95-Gal Poly-Top	\$88
8.752-211.0	95-Gal Wheeled Poly-Top	\$93

Note

NO NEED TO BUY THE SAME SPILL KIT OVER AND OVER AGAIN!

SPILL KIT ACCESSORIES

P.P.E. SPILL PAK

Includes all the Personal Protection Equipment you will need to arm yourself for the fight against the toughest of spills.



Part No.	Description	Price
8.752-215.0	P.P.E. Spill Pak	\$155

ENSORB® SUPER ABSORBENT

ENSORB® Super Absorbent has virtually unlimited uses. It immediately absorbs liquids of any viscosity, leaving surfaces clean and dry.



Part No.	Description	Price
8.752-739.0	1.5 Cubic Ft. Bag	\$21
8.752-740.0	1-Gal Jug Dispenser	\$14
8.752-741.0	1-Gal Jug Dispenser - Case of 6	\$83
8.752-742.0	1-Qt Zip Seal Bags	\$48

SPILL KIT ACCESSORIES



Caution Sign



Drum Dolly



Tamper Seal

Part No.	Description	Price
8.752-212.0	Spill Caution Sign	\$36
8.752-662.0	Salvage Drum Dolly	\$179
8.752-214.0	Tamper Seal (10/bag)	\$14
8.752-213.0	Hazmat Disposable Bags (250/case)	\$476

ENSORB® SOK

Quickly neutralize odors at the source with ENSORB® SOK, the revolutionary odor eliminating absorbent! Effective and environmentally safe, this rapid-action Spill and Odor Killer is safe to use around kids, pets and virtually anywhere!



ENSORB® SOK Kit



ENSORB® Shaker

Part No.	Description	Price
8.752-745.0	ENSORB® SOK Kit	\$29
8.752-746.0	ENSORB® SOK Kit (Case of 6)	\$167
8.752-747.0	ENSORB® SOK Shaker (Case of 6)	\$100
8.752-748.0	ENSORB® SOK Pail 5-Gallon	\$238
8.752-749.0	ENSORB® SOK 15-Gallon Drum	\$595

CHEMKLENZ® IMMEDIATE SPILL RESPONSE NEUTRALIZES BOTH LIQUID & VAPOR HAZARDS

ChemKlenz® is a universal chemical absorbent that neutralizes both acids and bases, including hydrofluoric acid and a wide variety of hazardous chemicals.



Part No.	Description	Price
8.752-765.0	Wallmount & Shaker	\$262
8.752-763.0	Wallmount Station	\$60
8.752-764.0	Shaker (750 gram granules)	\$210
8.752-766.0	Chemklenz Bags - 500 gram	\$157
8.752-767.0	Chemklenz Bags - 5kg	\$1,050
8.752-768.0	Pail 5 kg pail (granules)	\$1,138
8.752-771.0	Pressurized Cylinders 4 kg	\$1,702
8.752-770.0	Pressurized Cylinders 2 kg	\$1,114
8.752-769.0	Pressurized Cylinders 1 kg	\$724
8.752-774.0	Wall Mounts 4-kg	\$12
8.752-775.0	Wall Mounts 2-kg	\$12
8.752-777.0	Wall Mounts 1-kg	\$12
8.752-772.0	Vehicle Mounts 4-kg	\$121
8.752-776.0	Vehicle Mounts 2-kg	\$98
8.752-778.0	Vehicle Mounts 1-kg	\$74
8.752-773.0	Applicator Wand	\$552

Note

SPRINKLE DOWN ENSORB® TO IMMEDIATELY ABSORB LIQUIDS OF ANY VISCOSITY. SWEEP UP TO LEAVE SURFACES CLEAN AND DRY!

SORBENTS



PILLOWS

Thirsty loose-filled pillows pick up your spills quickly and efficiently.



Part No.	Description	Price
8.752-729.0	ENSORB® Pillows, Oil-Only, 8"x17", 20/case	\$160
8.752-730.0	ENSORB® Pillows, Oil Only, 17"x17", 10/case	\$152
8.752-733.0	ENSORB® Pillows, Universal, 8"x17", 20/case	\$160
8.752-734.0	ENSORB® Pillows, Universal, 17"x17", 10/case	\$110
8.752-727.0	Sorbent Pillows, Oil-Only, 10"x10", 40/case	\$160
8.752-728.0	Sorbent Pillows, Oil Only, 18"x18", 16/case	\$152
8.752-731.0	Sorbent Pillows, Universal, 10"x10", 40/case	\$160
8.752-732.0	Sorbent Pillows, Universal, 18"x18", 16/case	\$110
8.752-735.0	Sorbent Pillows, Aggressive, 10"x10", 40/case	\$169
8.752-736.0	Sorbent Pillows, Aggressive, 18"x18", 16/case	\$126

SORBENT QUICK REFERENCE GUIDE

OIL ONLY - White and widely used for oils and hydrocarbons (available in meltblown and bonded.) Oil – Only Sorbents provide superior water resistance and can absorb up to 25 times their weight. Ideal for absorbing oil off of water during maintenance and repair when needing to avoid soaking up water and water-based fluids.

UNIVERSAL - These highly versatile sorbents are grey and used in most all industries. Bonded for added strength and durability, Universal sorbents are a great choice for absorbing a wide range of fluids. These will absorb both water and oil-based liquids.

AGGRESSIVE - Also known as Hazmat sorbents, can range in a variety of colors with yellow being the most standard for visible hazardous material recognition. Aggressive sorbents are best used for the clean-up of unknown, toxic, flammable, corrosive and chemical substance spills.

PADS

Meltblown polypropylene sorbent pads and rolls are the most cost-effective absorption technology available. Fast-wicking fibers allow them to absorb up to 25 times their weight!



Part No.	Description	Price
8.752-690.0	ENSORB® Pads, Oil-Only, Heavy, Bonded	\$60
8.752-691.0	ENSORB® Pads, Oil Only, Medium, Bonded	\$55
8.752-692.0	ENSORB® Pads, Oil-Only, Single, Bonded	\$62
8.752-695.0	ENSORB® Pads, Oil Only, Heavy, Laminated	\$43
8.752-696.0	ENSORB® Pads, Oil-Only, Medium, Laminated	\$43
8.752-704.0	ENSORB® Pads, Universal, Heavy, Bonded	\$60
8.752-705.0	ENSORB® Pads, Universal, Medium, Bonded	\$50
8.752-706.0	ENSORB® Pads, Universal, Single, Bonded	\$62
8.752-684.0	Sorbent Pads, Oil-Only, Heavy	\$67
8.752-685.0	Sorbent Pads, Oil Only, Medium	\$52
8.752-686.0	Sorbent Pads, Oil-Only, Single	\$71
8.752-687.0	Sorbent Pads, Oil-Only, Heavy, Bonded	\$71
8.752-688.0	Sorbent Pads, Oil Only, Medium, Bonded	\$60
8.752-689.0	Sorbent Pads, Oil-Only, Single, Bonded	\$83
8.752-693.0	Sorbent Pads, Oil-Only, Heavy, Laminated	\$98
8.752-694.0	Sorbent Pads, Oil Only, Medium, Laminated	\$64
8.752-701.0	Sorbent Pads, Universal, Heavy, Bonded	\$71
8.752-702.0	Sorbent Pads, Universal, Medium, Bonded	\$67
8.752-703.0	Sorbent Pads, Universal, Single, Bonded	\$83
8.752-711.0	Sorbent Pads, Aggressive, Heavy, Bonded	\$83
8.752-712.0	Sorbent Pads, Aggressive, Medium, Bonded	\$67

ROLLS

Part No.	Description	Price
8.752-699.0	ENSORB® Rolls - Oil-Only Bonded	\$100
8.752-700.0	ENSORB® Rolls - Oil-Only (split) Bonded	\$98
8.752-709.0	ENSORB® Rolls - Universal Bonded	\$98
8.752-710.0	ENSORB® Rolls - Universal (split) Bonded	\$107
8.752-697.0	Sorbent Rolls - Oil-Only Bonded	\$155
8.752-698.0	Sorbent Rolls - Oil-Only (split) Bonded	\$155
8.752-707.0	Sorbent Rolls - Universal Bonded	\$162
8.752-708.0	Sorbent Rolls - Universal (split) Bonded	\$143
8.752-713.0	Sorbent Rolls - Aggressive Bonded	\$143
8.752-714.0	Sorbent Rolls - Aggressive (split) Bonded	\$143

SOCKS

An excellent choice for surrounding spills and for use around machinery and equipment.



Part No.	Description	Price
8.752-719.0	ENSORB® Socks, Oil Only, 3"x4', 40/case	\$117
8.752-720.0	ENSORB® Socks, Oil Only, 4"x10', 5/case	\$48
8.752-723.0	ENSORB® Socks, Universal, 3"x4', 40/case	\$93
8.752-724.0	ENSORB® Socks, Universal, 3"x8', 10/case	\$71
8.752-717.0	Sorbent Socks, Oil-Only, 3"x4', 40/case	\$131
8.752-718.0	Sorbent Socks, Oil Only, 3"x8', 20/case	\$131
8.752-721.0	Sorbent Socks, Universal, 3"x4', 40/case	\$131
8.752-722.0	Sorbent Socks, Universal, 3"x8', 20/case	\$131
8.752-725.0	Sorbent Socks, Aggressive, 3"x4', 40/case	\$190
8.752-726.0	Sorbent Socks, Aggressive, 3"x8', 20/case	\$190

BOOMS

Great for picking up all spilled oils and hydrocarbons on water. Fast-wicking white fibers are stuffed into 5" and 8" diameter Oil Only booms 10' long.



Part No.	Description	Price
8.752-716.0	5"x10', 4/case	\$119
8.752-715.0	8"x10', 4/case	\$157

DRUMTOPPER PADS

Fibers will absorb up to 25 times their weight!



Part No.	Description	Price
8.752-737.0	Oil Only	\$100
8.752-738.0	Universal	\$100

IMBIBER BEADS IMBICATOR

Capture and contain a broad range of liquid organics while eliminating free liquids. Beads change color to indicate the saturation level or presence of a spill.



Part No.	Description	Price
8.752-756.0	7"x7" Packets	\$274
8.752-757.0	7"x72" Mini Boom	\$226
8.752-758.0	12"x21" Pillows	\$250
8.752-759.0	21"x35" Blanket	\$250
8.752-760.0	Imbibitor Beads / Sand Mix	\$286

DRIP SENTINEL MAINTENANCE PRODUCTS

The sorbent blanket is made of 8 oz., 100 mils thick, non-woven geo-textile that is backed by a layer of 20-mil fuel/chemical resistant polyethylene. Provides a protective sorbent pad between the maintenance item and placement area. Hose wraps absorb hose leaks from 2-10" while the bibb allows for quick disconnect of dripping hoses and pipes.



Blankets



Hose Bibbs



Wraps

Part No.	Description	Price
8.752-395.0	Blankets, Small, 12'x3'	\$117
8.752-396.0	Blankets, Medium, 12'x6'	\$167
8.752-397.0	Blankets, Large, 12'x9'	\$345
8.752-398.0	Blankets, X-Large, 12'x12'	\$417
8.752-389.0	Bibbs, Single	\$24
8.752-390.0	Bibbs, Case of 5	\$114
8.752-391.0	Wraps, Small, 2"-3"	\$24
8.752-392.0	Wraps, Medium, 4"x5"	\$45
8.752-393.0	Wraps, Large, 6"-8"	\$52
8.752-394.0	Wraps, X-Large, 10"	\$62

STORMWATER



STORM SENTINEL™ CATCH BASIN INSERT

The Storm Sentinel Drain Protection Inserts help companies comply with Stormwater Pollution Prevention Plans and Stormwater Best Management Practices by protecting your storm drains and catch basins. It's the sure way to catch oil and sediment headed into storm drains and sewers with the industry's only self-supporting frame.



27" - 29" ROUND

Part No.	Description	Price
8.752-291.0	Trash & Debris	\$64
8.752-292.0	Trash, Debris, & Sediment	\$67
8.752-298.0	Trash, Debris, & Sediment, Oil, & Hydrocarbons	\$95

16" x 20" to 28" x 36" RECTANGULAR

Part No.	Description	Price
8.752-293.0	Trash & Debris	\$64
8.752-295.0	Trash, Debris, & Sediment	\$67
8.752-299.0	Trash, Debris, & Sediment, Oil, & Hydrocarbons	\$95

25" x 25" to 42" x 42" RECTANGULAR (X-LARGE)

Part No.	Description	Price
8.752-294.0	Trash & Debris	\$76
8.752-296.0	Trash, Debris, & Sediment	\$79
8.752-300.0	Trash, Debris, & Sediment, Oil, & Hydrocarbons	\$107

DRAIN DAM

Redirect water into catch basin while absorbing some hydrocarbons.



Part No.	Description	Price
8.752-301.0	Drain Dam	\$40

STORM SENTINEL™ CURB INLET

Insert won't fall into the basin, even when fully loaded. Adjustable to fit curb inlet openings from 24" to 30" wide.

GREAT FOR USE IN:

- Industrial facilities
- Construction sites
- Parking lots
- Drive-up retail facilities



Part No.	Description	Price
8.752-302.0	Trash & Debris	\$69
8.752-303.0	Trash, Debris, & Sediment	\$71
8.752-304.0	Trash, Debris, & Sediment, Oil, & Hydrocarbons	\$100

Note

**COMPETITIVE UNITS
REQUIRE MULTIPLE PEOPLE
TO GET THE JOB DONE.**

WITH STORM SENTINEL™,
INSTALLATION AND REMOVAL
IS ALWAYS A 1-PERSON JOB!



UNIVERSAL POLY-DRUM™ FUNNEL & COVER

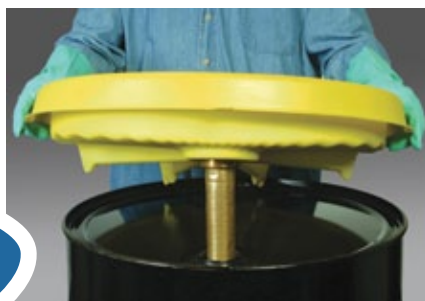
Fits both closed-head and open-head 55-gallon drums, 30-gallon drums, and other containers. Features include patented scalloped design, high side wall and bung fitting holders, and an optional cover for added protection.



Part No.	Description	Price
8.752-370.0	Universal Poly-Funnel	\$52
8.752-372.0	Universal Poly-Funnel Cover	\$60

UNIVERSAL POLY-DRUM™ SAFETY FUNNEL

All the features of the Universal Poly-Drum™ Funnel plus a non-sparking safety bung closure with flame arrestor.



Optional cover available.

Part No.	Description	Price
8.752-371.0	Universal Poly-Safety Funnel	\$440

BOSS DEWATERING FILTER BAGS

BOSS Filter Bags' innovative design and high quality filter material removes sediment from discharge pump water. The filter bag is formed from non-woven, polypropylene geo-textile material made for removing oil, grease, sediment, litter and debris from pump water.



Part No.	Description	Price
8.752-980.0	Dewatering Filter Bags, 3'x3'	\$33
8.752-981.0	Dewatering Filter Bags, 6'x6'	\$79
8.752-982.0	Dewatering Filter Bags, 12'x12'	\$155

POLY-PAIL™ FUNNEL

Mounts to 3.5-, 5-, and 6-gallon tighthead pails. Also fits open-top pails with 12" diameter.



Poly-Pail Funnel



Poly-Pail Funnel Cover

Part No.	Description	Price
8.752-373.0	Poly-Pail Funnel	\$62
8.752-374.0	Poly-Pail Funnel Cover	\$62

POLY-DRUM™ TOPPER

Snap directly onto any 55-gallon open or closed-head drum to keep out debris and protect drums.



Part No.	Description	Price
8.752-375.0	Poly-Drum Topper	\$69

STEEL PRODUCTS

1, 2 & 4-DRUM STEELPALS

Leak-free, heavy gauge steel with 100% inspected sump welds, allow for complete compliance and use!

FEATURES & BENEFITS:

- Certified leak-free with 100% inspected sump welds
- Extra heavy gauge steel for extended life
- Four way forklift access
- Galvanized steel grating
- Durable chemical-resistant finish



2-Drum Steelpal



4-Drum Inline Steelpal



4-Drum Steelpal

Part No.	Description	Price
8.752-670.0	1-Drum Steelpal	\$1,024
8.752-671.0	2-Drum Steelpal	\$1,236
8.752-672.0	4-Drum Steelpal	\$1,498
8.752-673.0	4-Drum Inline Steelpal	\$1,712

STEEL IBC TOTES

Safely store hazardous chemicals in Intermediate Bulk Containers over a compliant spill sump. One and two tote designs offer you the flexibility to choose the right sump for your application.



Double IBC Steel Tote

Preferred construction
for storing
flammables

Part No.	Description	Price
8.752-682.0	IBC Steel Tote	\$3,450
8.752-683.0	Double IBC Steel Tote	\$4,048

2 & 4 DRUM HAZMAT LOCKERS

HazMat Lockers are complete with lockable, hinged lid & doors for storing hazardous materials securely anywhere!



Part No.	Description	Price
8.752-676.0	2-Drum Hazmat Locker	\$4,055
8.752-677.0	4-Drum Hazmat Locker	\$5,224

2 & 4 DRUM STEEL STACKERS

Safely and securely move your chemicals with our stacker transport pallets with added side rails for efficient moving and stacking.



2-Drum Stacker



4-Drum Stacker

Part No.	Description	Price
8.752-674.0	2-Drum Steel Stacker	\$1,650
8.752-675.0	4-Drum Steel Stacker	\$1,871

PALLET RACK SUMP INSERTS

Designed to fit your pallet racks, this economical Sump Insert installs quickly and can help you comply with containment regulations while keeping you safe and spill-free!



Part No.	Description	Price
8.752-678.0	For Racks 96"x36"	\$1,724
8.752-679.0	For Racks 108"x36"	\$1,936
8.752-680.0	For Racks 96"x42"	\$2,007
8.752-681.0	For Racks 108"x42"	\$2,252

SINGLE & DUAL CYLINDER DOLLY™

Cylinder Dollies™ are designed to be a more functional, maneuverable, and better balanced transporter for gas cylinders than conventional dollies or forklifts.

Unlike metal cylinder carts, the Cylinder Dollies™ are spark-resistant and the rugged polyethylene construction will not rust or corrode under harsh weather conditions.



Dual Cylinder Dolly

Part No.	Description	Price
8.752-657.0	Single Cylinder Dolly™ HD	\$159
8.752-658.0	Single Cylinder Dolly™ HD ATD	\$393
8.752-659.0	Dual Cylinder Dolly™ HD	\$595
8.752-653.0	Cylinder Strap	\$24

6-PACK CYLINDER RACK™

Efficiently sized to easily move through standard doorways. Forkliftable! Able to handle cylinders 3" to 10" diameter.



Part No.	Description	Price
8.752-650.0	6-Pack Cylinder Rack™	\$529
8.752-651.0	6-Pack Ramp	\$157

2-CYLINDER POLY-STAND™

Ideal for inexpensive wall-mounted storage. Accommodates two cylinders with diameters of 3" to 12-3/8".



2-Cylinder Stand

4-CYLINDER POLY-STAND™

The 4-Pack Cylinder Stand™ is forkliftable and floor mountable. Holds four cylinders up to 12-3/8" in diameter.



4-Cylinder Stand

Part No.	Description	Price
8.752-654.0	2-Cylinder Poly-Stand	\$202
8.752-655.0	4-Cylinder Poly-Stand	\$426

CASTER FRAME

Gives the 6-Pack Cylinder Rack™ mobility to go anywhere!



Part No.	Description	Price
8.752-652.0	6-Pack Caster Frame	\$226

UNIVERSAL CYLINDER BRACKET™

Ideal for low-cost wall or truck mounted storage. Design your own configuration to hold one, two, three, or x amount of cylinders with extendable modular flexibility.

Accommodates cylinders from 3" to 10" in diameter.

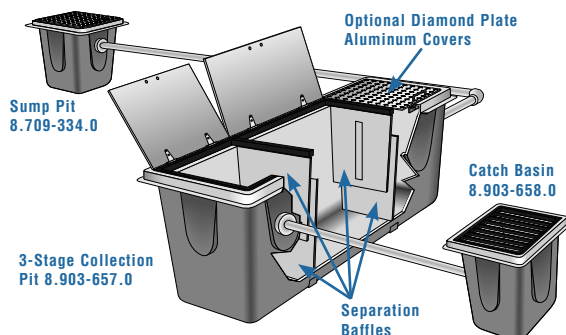


Part No.	Description	Price
8.752-656.0	Universal Cylinder Bracket	\$24

COLLECTION PITS / ACCESSORIES

COLLECTION PITS: BELOW-GROUND PRE-TREATMENT OF WASTEWATER

Reinforced, pre-fabricated fiberglass pits are an economical in-ground, oil-water separator as well as provide ideal pre-treatment of wash-water.



The 3-stage collection pit is designed with baffles and for Water Maze's proprietary oil-coalescing plates to be inserted into the center chamber for enhanced separation.

This fiberglass separator is significantly easier and less expensive to ship and install than shipping or constructing on site collection pits made of concrete. The reinforced fiberglass sidewalls prevent bowing and underground movement.

The fiberglass collection pit works best when combined with a catch basin and sump pit, which are both made of the same chemical-resistant, reinforced fiberglass.

The wash water flows into the catch basin, where solids drop to the bottom. The runoff then flows into the collection pit. As it passes through the baffles, oil and other debris are separated from the water. In some instances, this is all that is needed to meet discharge limits for the sewer. If needed, a sump pit may be used to transfer wastewater into a Water Maze water treatment system.

PIT CLEANER: FOR SLUDGE REMOVAL

Cleaning sludge from the bottom of a collection pit is neither easy nor fun, but the Pit Cleaner makes it bearable.

An extended wand is attached to a pressure washer, with a minimum of 1000 PSI. The pressure is channeled so that it creates a vacuum, capable of suctioning mud and sludge from the bottom of a pit or even a pond.

The sludge is deposited into a porous collection bag, mounted on a hand truck, where the water drains out and the sludge is allowed to dry for eventual disposal.



Part No.	Description	Price
8.903-600.0	Pit Cleaner (includes wand and hose only)	\$680
8.709-206.0	Sludge Cart Only (includes 5 bags)	\$425
8.903-601.0	Shallow Pit Cleaner (up to 2 feet deep), Qty 1	\$974
8.719-191.0	Sludge Bag (biodegradable, cotton fiber), Qty 1	\$5

Part No.	Description	Price
8.903-657.0	Collection Pit, Fiberglass, In-Ground Oil-Water Separator, 36" x 108" x 54" (Inside Dimensions); 60 GPM	\$3,895
8.903-674.0	Cover for Collection Pit (8.903-657.0), Hinged Aluminum Diamond Tread Plate w/ Steel Tube Frame, 3' x 9'	\$1,350
8.903-673.0	Coalescing Grid Packs, 58 Plates, 1,700 sq. ft. Surface Area	\$1,895
8.903-658.0	Catch Basin, Fiberglass, In-Ground, 3' x 3' x 4.5' (Inside Dimensions)	\$995
8.903-678.0	Cover for Catch Basin (#8.903-658.0), Aluminum Diamond Tread Plate, 3' x 3'	\$650
8.903-677.0	Grating for Catch Basin (#8.903-658.0), Hot Rolled Steel, 1/2" x 2" Flatbar, 1.5' x 3' (includes 2 grates) - *See note	\$995
8.709-334.0	Sump Pit, Fiberglass, In-Ground, 2' x 2' x 3' (Inside Dimensions)	\$680
8.903-675.0	Cover for Sump Pit (#8.709-334.0), Aluminum Diamond Tread Plate w/ Steel Tube Frame, 2' x 2'	\$395
8.903-676.0	Grating for Sump Pit* (#8.709-334.0), Hot Rolled Steel, 1/2" x 2" Flatbar, 2' x 2'	\$495
8.712-023.0	Wood Brace Kit (bracing to reinforce fiberglass while pouring concrete, required for installation of Collection Pit Part# 8.903-657.0)	\$295

*Gratings meet H-20 truck load rating.

LITTLE GIANT PUMPS



- Heavy-duty cast iron

8.715-367.0

Part No.	Description	Price
8.715-367.0	Sump Pump, 1/2 hp 120V	\$1,095
8.715-369.0	Sump Pump, 1/3 hp 220V	\$491
8.753-541.0	Sump Pump, 208-240V	\$1,155
8.753.542.0	Mechanical Float, 15ft Cord (Required with above float PN#8.753-541.0)	\$124

EBARA PUMPS



- Heavy-duty impeller
- Stainless steel

8.715-438.0

Part No.	Description	Price
8.715-438.0	Sump, 1/2 hp 230V/ 3PH	\$1,572
8.715-439.0	Sump, 1/2 hp 460V/ 3PH	\$1,572

EVAPORATOR BELT: ECONOMICAL ALTERNATIVE FOR LOW-VOLUME EVAPORATION



The Evaporator Belt is ideal for evaporating very low volumes of wastewater.

The electric-powered belt wraps around a standard 55-gallon steel drum and slowly heats non-flammable liquids to temperatures of 70° to 250°F.

The heavy-duty aluminized steel belt includes thermostatic control and weighs only 14 lbs.

EQUIPMENT		
Part #	Description	Price
8.707-034.0	Wrap-It-Heat Water Reduction Drum Heater Evaporation Rate of 1.4 GPH (230V, 1ph, 12.5 amps)	\$1,325
Note: Drum not included		

STEEL WASHPADS



ENVIRONMENTAL CONTAINMENT RACKS

The Water Maze above ground containment rack systems makes shipping and installing a wash rack easier than ever. With no permitting required, this bolt together system can be installed in a matter of hours.

The low profile modular design with a maximum deck height of 6 inches (15.24 cm) can be purchased in various sizes and configurations to meet your current site requirements. The modular design also allows for shipping under LTL freight rates, or inside of an ocean cargo container for export purposes.

FEATURES AND BENEFITS:

- Multiple Ramp options available:
Drive-On / Back-Off or Drive-Through
- Available in 9' wide and 18' wide models
- Diamond plate deck surface
- Deck height 6"

DRIVE-ON / BACK-OFF CONFIGURATION (18 FEET WIDE MODEL)



DRIVE-THROUGH CONFIGURATION (18 FEET WIDE MODEL)



SHOWN W/ OPTIONAL CANOPY



STEEL WASHPADS

CONTAINMENT RACK SPECIFICATIONS - 9 FEET WIDE:

DIMENSIONS:	Inside width = 9 feet (2.743 meters), Inside lengths: increments of 7 feet (2.133 meters)
CAPACITY:	15,000 lbs. (6,818 kgs.) weight support distributed over a typical four-wheeled point contact in a 6' x 6' (1828 mm x 1828 mm) area.
MODULAR DECK & TROUGH DESIGN:	Lower deck consists of one section that is 9' (2.743 meters) wide x 7' (2.133 meters) long and incorporates a center trough that is approximately 24" (609 mm) wide x 4.5" (114 mm) deep and includes removable steel gratings that run full length. The outer deck height is 6" (152 mm) high and tapers towards the center trough. Multiple sections are bolted together (using alignment pins and seal strips) to match the overall deck length requirements.
OVERSPRAY WALLS:	6' high tubular steel with galvanized sheet metal
LAYOUT (options):	Drive-on / back-off with ONE SET of low angle approach ramps and overspray walls on three sides. Drive-through with TWO SETS of low angle approach ramps and overspray walls on two sides
MATERIALS OF CONSTRUCTION:	Custom U-channel steel fabricated substructure with diamond tread plate surface; tubular steel overspray walls with galvanized sheet metal covering.
METAL FINISHING:	Steel components are deep cleaned with a phosphate cleaning solution and then painted with a 2-step epoxy paint process. Diamond tread deck surface has a grit impregnated coating

CONTAINMENT RACK SPECIFICATIONS - 18 FEET WIDE:

DIMENSIONS:	Inside width: 18 feet (5.486 meters) Inside lengths: increments of 7 feet (2.133 meters)
CAPACITY:	60,000 lbs. -27,273 kgs. weight support (15,000 lbs. – 6,818 kgs. for typical four-wheeled point vehicle)
MODULAR DECK & TROUGH DESIGN:	Lower deck consists of sections. Section A = 10' wide x 7' long (3.04 m x 2.133 m), and Section B = 8' wide x 7' long (2.438 m x 2.133 m). The 10' wide section incorporates a center trough that is approximately 24" (609 mm) wide x 4.5" (114 mm) deep and includes removable steel gratings that run full length. The outer deck height of each section is 6" (152 mm) high and tapers towards the center trough. Multiple sections of A and B are bolted together (using alignment pins and seal strips) to match the overall deck length requirements.
OVERSPRAY WALLS:	6' high tubular steel with galvanized sheet metal 12' high tubular steel with outer support braces (OPTIONAL)
LAYOUT (options):	Drive-on / back-off with ONE SET of low angle approach ramps and overspray walls on three sides. Drive-through with TWO SETS of low angle approach ramps and overspray walls on two sides
MATERIALS OF CONSTRUCTION:	Custom U-channel steel fabricated substructure with diamond tread plate surface; tubular steel overspray walls with galvanized sheet metal covering.
METAL FINISHING:	Steel components are deep cleaned with a phosphate cleaning solution and then painted with a 2-step epoxy paint process. Diamond tread deck surface has a grit impregnated coating

AVAILABLE OPTIONS:

- **CUSTOM DECK WIDTHS** available upon requests.
- **INTEGRATED UNDERCARRIAGE RINSE SYSTEM:** 60 GPM @ 100 PSI, consisting of:
 - A 10' long spray bar system with 10 spray nozzle pockets welded into the deck plate so all the nozzles are sub surface.
 - The above is embedded into one set of the above deck sections (an "A" and "B" section).
 - A pumping system: centrifugal booster pump with enclosed impellers.
- **DUAL DIAPHRAGM PUMP RECOVERY SYSTEM:**
 - Includes heavy duty suction pumps (x2) that are capable of pumping heavy solids at a flow rate to keep up with the above undercarriage rinse system; flow activation of pumping system using PLC electrical interface with the customer supplied pressure washer and/ or water blaster system; hoses and hose connections from one end of the drain trough to the pump rack.
- **INTEGRATED CONVEYOR SYSTEM:** Automatically removes solids from the center trough system. Available for 18 feet wide or greater containment racks.
- **CANOPY COVERS:** Available to fit all models.
- **TREATMENT & DISCHARGE SYSTEMS**
- **RECYCLE SYSTEMS**



OCEAN CARGO CONTAINERS – (MODIFIED) EQUIPMENT STRUCTURES

As an alternative to constructing an onsite building, Water Maze offers 20 foot, or 40 foot long ocean cargo containers (new or used) modified to meet your specific site requirements. Typically, local construction permits are not required when installing this type of structure.



FEATURES AND BENEFITS:

- New, or used in refurbished condition
- Wooden floor
- Electrical breaker panel (up to 200 amps)
- Interior ceiling lights, fluorescent (20 foot x 2)
(40 foot x 4)
- Painted exterior
- Recessed plumbing



AVAILABLE OPTIONS:

- Electrical panel (up to 200 amps)
- Electrical outlets: 120 volt, 230 volt, 460 volt
- Electric conduits and Unistrut anchor channels with clamps
- 36" man-door(s) – metal lined, exterior grade
- Louvered vents, fans
- Heating & air conditioning systems
- Interior insulation with Kemplite lining (top and sides)
- Cargo worthy certification
- Custom modifications available upon request



CHEMICAL COMPATIBILITY KEY

CHEMICAL COMPATIBILITY KEY AND USER NOTE:

This report is offered as a guide and was developed from information, which, to the best of ENPAC's knowledge, was reliable and accurate. Due to variables and conditions of application beyond ENPAC's control, none of the data shown in this guide is to be construed as a guarantee, expressed or implied. ENPAC, LLC assumes no responsibility, obligation, or liability in conjunction with the use or misuse of the information.

The data shown is the result of laboratory tests obtained from leading chemical companies and independent reports that are intended to serve only as a guide. Testing is not conducted by ENPAC, LLC. No performance warranty is intended or implied. Confirmation of the validity and suitability in specific cases should be obtained. When considering flexible containment for specific applications, it is suggested that a fabric sample be tested in actual service before specification. Where impractical, tests should be devised which simulate actual service conditions as closely as possible.

Ratings are based on visual and physical examination of samples after removal from the test chemical. Results represent the material's ability to retain its performance properties when in contact with the indicated chemical.

The degree of chemical attack on any material is governed by the conditions under which it is exposed. Exposure time, temperature, and size of the area of exposure usually varies considerably in application, therefore, this table is given and accepted at the user's risk.

DETAILED KEY:

Y = Products should be suitable for prolonged or repeated contact with these substances (under the specified conditions).

S = Products may be suitable for intermittent contact; however, some deterioration in properties may occur. The user should perform qualification tests before or during usage of the container.

N = Substances aggressively attack the product or have vapor pressures incompatible with closed containers.

INDUSTRIAL FABRIC - CHEMICAL COMPATIBILITY GUIDE #1

CHEMICAL RESISTANCE FOR STINGER™ BERMS – BLACK

CHEMICAL	RATING								
AFFF	Y	Crude Oil	Y	Isopropyl Alcohol	S	Potassium Chloride	S		
Acetic Acid (5%)	S	Diesel Fuel	Y	Ivory Soap	Y	Potassium Sulfate	S		
Acetic Acid (50%)	N	Ethanol	Y	Jet A	Y	Raw Linseed Oil	Y		
Ammonium Phosphate	S	Ethyl Acetate	N	JP-4 Jet Fuel	Y	SAE-30 Oil	Y		
Ammonium Sulfate	S	Ethyl Alcohol	Y	JP-5 Jet Fuel	Y	Salt Water (25%)	S		
Antifreeze (ethylene glycol)	Y	Fertilizer Solution	Y	JP-8 Jet Fuel	Y	Sea Water	Y		
Animal Oil	Y	#2 Fuel Oil	Y	Kerosene	Y	Sodium Acetate Solutions	S		
ASTM Fuel A (100% Iso-octane)	Y	#6 Fuel Oil	Y	Magnesium Chloride	S	Sodium Bisulfite Solution	Y		
ASTM Oil #2 (Flash pt. 240 C)	Y	Gasoline	S	Magnesium Hydroxide	S	Sodium Hydroxide (60%)	S		
ASTM Oil #3	Y	Glycerin	Y	Methanol	Y	Sodium Phosphate	S		
Calcium Chloride Solutions	S	Hydraulic Fluid-Petroleum Based	Y	Mineral Spirits	Y	Sulfuric Acid (50%)	Y		
Calcium Hydroxide	S	Hydraulic Fluid-Phosphate Ester Based	N	Naphtha	Y	50% Tannic Acid	Y		
20% Chlorine Solution	Y	Hydrocarbon Type II (40% Aromatic)	N	Nitric Acid (5%)	S	Toluene	N		
Clorox	Y	Hydrochloric Acid (50%)	Y	Nitric Acid (50%)	N	Transformer Oil	Y		
Conc. Ammonium Hydroxide	Y	Hydrofluoric Acid (5%)	Y	Perchloroethylene	N	Turpentine	Y		
Corn Oil	Y	Hydrofluoric Acid (50%)	Y	Phenol Formaldehyde	S	Urea Formaldehyde	Y		
		Hydrofluosilicic Acid	Y	Phosphoric Acid (50%)	Y	UAN	Y		
				Phosphoric Acid (100%)	N	Vegetable Oil	Y		
				Phthalate Plasticizer	N	Water (200F)	Y		
						Zinc Chloride	S		

INDUSTRIAL FABRIC - CHEMICAL COMPATIBILITY GUIDE #2

CHEMICAL RESISTANCE FOR STINGER YELLOW JACKET,™ DRIPLOW BERM,™ SPILLPAD™ & SPILLPAL™ – YELLOW

CHEMICAL	RATING								
Ammonium Bifluoride	Y	Chloric Acid, 20%	Y	Green Liquor	Y	Potassium Hydroxide	Y		
Ammonium Fluoride, 25%	Y	Chlorine, Liquid	S	Hydrochloric Acid, 50%	Y	Potassium Hypochlorite	Y		
Ammonium Hydroxide	Y	Citric Acid	Y	Hydrofluoric Acid, dilute	Y	Propyl Alcohol	Y		
Ammonium Sulfate	Y	Copper Nitrate	Y	Hydrogen Peroxide, 90%	Y	Sea Water	Y		
Amyl Acetate	S	Copper Sulfate	Y	Hydrogen Sulfide, aqueous	Y	Soaps	Y		
Aqua Regia	Y	Corn Syrup	Y	Ketones	S	Sodium Chloride	Y		
Beer	Y	Cottonseed Oil	Y	Linseed Oil	Y	Sodium Hydroxide, 70%	Y		
Benzene	S	Detergents	Y	Magnesium Chloride	Y	Sodium Nitrate	Y		
Black Liquors	Y	Diethyl Ether	S	Methyl Alcohol	Y	Stearic Acid	S		
Bleach 12.5%	Y	Dimethyl Hydraxine	S	Methyl Bromide	S	Sulfur	Y		
Boric Acid	Y	Disodium Phosphate	Y	Methyl Ethyl Ketone	S	Sulfuric Acid, 80%	Y		
Bromic Acid	Y	Ethers	S	Methylene Chloride	S	Sulfuric Acid, 100%	S		
Butane	Y	Esters	S	Mineral Oil	Y	Tanning Liquors	Y		
Butylene	Y	Ethyl Alcohol	Y	Naptha	Y	Toluene, Toluol	S		
Calcium Chloride	Y	Ethylene Glycol	Y	Napthalene	S	Urea	Y		
Carbon Tetrachloride	S	Fatty Acids	Y	Nitric Acid, 30%	Y	Vegetable Oil	Y		
Caronic Acid	Y	Formaldehyde	Y	Nitric Acid, 100%	S	Whiskey	Y		
Castor Oil	Y	Fructose	Y	Oleic Acid	Y	Wines	Y		
		Furfural	S	Phosphoric Acid, 85%	Y	Zinc Chloride	Y		
		Gasoline	N	Potash	Y				
		Gin	Y	Potassium Chloride	Y				

INDUSTRIAL FABRIC - CHEMICAL COMPATIBILITY GUIDE #3

CHEMICAL RESISTANCE FOR STINGER™ SPILLPAL W/REMOVABLE FOAM – TAN

CHEMICAL	RATING								
AFFF	Y	Conc. Ammonium Hydroxide	Y	Hydrofluoric Acid (50%)	Y	Nitric Acid (5%)	S		
Acetic Acid (5%)	Y	Diesel Fuel	Y	Jet A	Y	Nitric Acid (50%)	N		
Acetic Acid (50%)	N	Ethanol	Y	JP-4 Jet Fuel	Y	Perchloroethylene	S		
20% Chlorine Solution	Y	#2 Fuel Oil	Y	JP-5 Jet Fuel	Y	Phenol Formaldehyde	S		
Clorox	Y	#6 Fuel Oil	Y	JP-8 Jet Fuel	Y	Phosphoric Acid (50%)	Y		
		Gasoline	S	Kerosene	Y	Phosphoric Acid (100%)	N		
		Hydraulic Fluid- Petroleum Based	Y	Methanol	Y	Sodium Hydroxide (60%)	Y		
		Hydraulic Fluid- Phosphate	N	Methyl Alcohol	Y	Sulphuric Acid (50%)	Y		
		Hydrocarbon Type II (40% Aromatic)	N	Mineral Spirits	Y	Toluene	N		
		Hydrochloric Acid (50%)	Y	Naphtha	Y	Transformer Oil	Y		
		Hydrofluoric Acid (5%)	Y						

POLYETHYLENE - CHEMICAL COMPATIBILITY GUIDE #4

Y = YES, RECOMMENDED

S = SOMETIMES, SUITABLE
INTERMITTENTLY

N = NO, NOT
RECOMMENDED

CHEMICAL RATING

Acetaldehyde (40%)	Y	Bromine, Liquid	N	Ethyl Ether	N	Methyl Isobutyl Ketone	S	Sodium Bicarbonate	Y
Acetamide	Y	Bromine, Water	N	Ethylene Chloride	N	Methyl Isopropyl ketone	S	Sodium Bisulfate (10%)	Y
Acetic Acid (50%)	Y	Bromobenzene	N	Ethylene Chlorohydrin	Y	Methyl Sulfate	Y	Sodium Bisulfite	Y
Acetic Acid (100%)	N	Bromoform	N	Ethylene Diamine	Y	Methyl Sulfuric Acid (All Conc.)	Y	Sodium Bromate	S
Acetic Acid Anhydride	S	Butadiene	Y	Ethylene Dichloride	N	Milk	Y	Sodium Bromide	Y
Acetic Ether	S	Butane	Y	Ethylene Glycol	Y	Mineral Oils	Y	Sodium Bromide Dilute Sol.	Y
Acetone	Y	Butanediol (100%)	Y	Ethylene Oxide	N	Molasses	Y	Sodium Carbonate	Y
Acetylene Tetrabromide	S	Butanol	Y	Fatty Acids	Y	Monochloroacetic Acid Ethyl Ester	Y	Sodium Chlorate	Y
Acrylic Emulsions	S	Butyl Acetate	Y	Fatty Alcohol Sulfonate	Y	Monochloroacetic Acid Methyl Ester	Y	Sodium Chloride	Y
Acrylonitrile	Y	Butyl Alcohol (100%)	Y	Ferric Salts	Y	Morpholin	Y	Sodium Chlorite	Y
Adipic Acid	Y	Butylene	N	Ferric Sulfate	Y	Mowilith D	Y	Sodium Chromate	Y
Aliphatic Hydrocarbons (Hexane Octane, hexene, Octene, Etc.)	Y	Butylene Glycol	Y	Ferrous Salts	Y	Muriatic Acid	Y	Sodium Disulfite	Y
Allyl Alcohol (96%)	Y	Butylene Liquid	N	Ferrous Sulfate	Y	Naptha	S	Sodium Dithionite (10%)	Y
Alum (Aqueous Solutions)	Y	Butyl Phenol	N	Fertilizer Salts	Y	Napthalene	S	Sodium Ferricyanide	Y
Aluminum Chloride (20%)	Y	Butyric Acid	Y	Fish Solubles	Y	Nickel Salts	Y	Sodium Ferrocyanide Sat'd	Y
Aluminum Fluoride	Y	Calcium Carbonate	Y	Fluoboric Acid	Y	Nicotine, Dilute	Y	Sodium Fluoride Sat'd	Y
Aluminum Hydrogen Solution (10%)	Y	Calcium Chloride	Y	Fluosilicic Acid (All Conc.)	Y	Nicotinic Acid	Y	Sodium Hydroxide Conc.	Y
Aluminum Hydroxide	Y	Calcium Hydroxide	Y	Formaldehyde (40%)	Y	Nitric Acid (<50%)	Y	Sodium Hypochlorite	Y
Alums (All Types)	Y	Calcium Hypochlorite	Y	Formamide	Y	Nitrobenzene	S	Sodium Iodide	Y
Ammonia (Anhydrous)	Y	Calcium Nitrate (50%)	Y	Formic Acid (All Conc.)	Y	Nitrotoluene	S	Sodium Nitrate	Y
Ammonia (Aqueous)	Y	Calcium Sulfate	Y	Fruit Pulp	Y	Octyl Cresol	Y	Sodium Oxalate	Y
Ammonia (100% Dry Gas)	Y	Camphor Oil	N	Fuel Oil	Y	Oils and Fats	Y	Sodium Persulfate	Y
Ammonium Salts	Y	Carbon Disulfide	N	Furfural (100%)	Y	Oleic Acid (All Conc.)	Y	Sodium Phosphate	Y
Ammonium Acetate	Y	Carbonic Acid (Aq.CO2)	Y	Furfuryl Alcohol	N	Oleum Conc.	N	Sodium Silicate	Y
Ammonium Bifluoride	Y	Carbon Monoxide	Y	Gallic Acid Sat'd	Y	Olive Oil	Y	Sodium Sulfate	Y
Ammonium Carbonate 50%	Y	Carbon Tetrachloride	N	Gasoline	Y	Orange Extract	Y	Sodium Sulfide	Y
Ammonium Chloride	Y	Castor Oil Conc.	Y	Gasohol	Y	Oxalic Acid (All Conc.)	Y	Sodium Sulfite	Y
Ammonium Hydrogen	Y	Caustic (Aqueous)	Y	Gelatin	Y	Palmitic Acid	N	Sodium Sulfonates	Y
Ammonium Hydroxide	Y	Caustic Potash Sol. (50%)	Y	Gin	Y	Palm Oil	S	Sodium Thiosulfate	Y
Alums (All Types)	Y	Caustic Soda Sol. (10%)	Y	Gluconic Acid (All Conc.)	Y	Paraffin Emulsions	Y	Spindle Oil	Y
Ammonia (Anhydrous)	Y	Chloral Hydrate	Y	Glucose	Y	Paraffin Oil	Y	Stannic Salts	Y
Ammonia (Aqueous)	Y	Chloroethanol	Y	Glycerine	Y	Perchloric Acid (50%)	Y	Stannous Salts	Y
Ammonia (100% Dry Gas)	Y	Chloric Acid (10%)	Y	Glycol	Y	Perchloroethylene	N	Starch Solution Sat'd	Y
Ammonium Salts	Y	Chloroacetic Acid	Y	Glycol Ethers	Y	Petroleum	Y	Stearic Acid (All Conc.)	Y
Ammonium Acetate	Y	Chlorobenzene	Y	Glycolic Acid (All Conc.)	Y	Petroleum Ether	S	Succinic Acid	Y
Ammonium Bifluoride	Y	Chloroform	N	Grape Sugar Sat'd Aq.	Y	Phenol (90%)	N	Sugar Solutions, Glucose,	
Ammonium Carbonate 50%	Y	Chloromethane	N	Heptane	Y	Phenylhydrazine	N	Lactose, Sucrose, etc.	Y
Ammonium Chloride	Y	Chlorosulfonic Acid 100%	N	Hexane	Y	Phosphoric Acid All Conc	Y	Sulfur	Y
Ammonium Hydrogen	Y	Chrome Alum Sat'd	Y	Hexanol Tert	Y	Phosphorous Chlorides	S	Sulfuric Acid (98%)	N
Ammonium Hydroxide	Y	Chromic Acid (50%)	S	Hydrazine Hydrate	Y	Phosphorous Yellow (100%)	Y	Sulfuric Acid, Fuming	S
Ammonium Metaphosphate Sat'd	Y	Cider	Y	Hydrosulfite (10%)	Y	Phosphorous Pentoxide	Y	Sulfurous Acid	Y
Ammonium Nitrate (10%)	Y	Citric Acid (All Conc.)	Y	Hydroxylamine Sulfate	Y	Photographic Solutions	Y	Sulfuryl Chloride	N
Ammonium Nitrate Sat'd	Y	Clorox Bleach	Y	Hydrazine (35%)	Y	Phthalic Acid (All Conc.)	Y	Tallow	Y
Ammonium Persulfate Sat'd	Y	Coconut Oil Alcohols	Y	Hydrazine Hydrochloride	Y	Phthalic Anhydride	Y	Tannic Acid	Y
Ammonium Phosphate	Y	Cola Concentrates	Y	Hydroiodic Acid (All Conc.)	Y	Pickling Baths, Sulfuric Acid,	Y	Tanning Extracts	Y
Ammonium Sulfate (1%)	Y	Compressed Air Conditioning Oil	Y	Hydrobromic Acid (50%)	Y	Hydrochloric Acid	Y	Tartaric Acid Sat'd	Y
Ammonium Sulfate Sat'd	Y	Copper Salts	Y	Hydrocyanic Acid Sat'd	Y	Picric Acid (1%)	Y	Tetrachlorethane	N
Ammonium Sulfide Sat'd	Y	Copper Cyanide	Y	Hydrochloric Acid (All Conc.)	Y	Plating Solutions	Y	Tetrachloroethylene	N
Ammonium Thiocyanate Sat'd	Y	Copper Nitrate	Y	Hydrofluoric Acid (All Conc.)	Y	Potash	Y	Tetramethyl Lead	N
Amyl Acetate	Y	Copper Sulfate	Y	Hydrofluorsilicic Acid (All Conc.)	Y	Potassium/Aluminum Sulfates (50%)	Y	Tetrahydrofuran	N
Amyl Alcohol (100%)	N	Corn Oil	Y	Hydrogen Bromide (10%)	Y	Potassium Bichromate	Y	Tetrahydronaphthalene	N
Amyl Chloride	S	Cottonseed Oil	Y	Hydrogen Peroxide (90%)	Y	Potassium Borate (10%)	Y	Thionyl Chloride	N
Aniline (100%)	S	Cresol (90%)	Y	Hydrogen Phosphide 100%	Y	Potassium Bromide	Y	Tin Salts	Y
Aniline Hydrochloride	S	Cresylic Acid	Y	Hydroquinone	Y	Potassium Chlorate	Y	Titanium Salts	S
Animal Fats	Y	Crotonic Aldehyde	Y	Hydrogen Sulfide	Y	Potassium Chloride	Y	Toluene	S
Anti-Freeze	Y	Cuprous Chloride Sat'd	Y	Hypochlorous Acid	Y	Potassium Chromate	Y	Toluene Sulfonic Acid	
Antimony Salts	Y	Cyclohexane	Y	Inks	Y	Potassium Cyanide	Y	(All Conc.)	S
Antimony Trichloride 90%	Y	Cyclohexanol	Y	Iodine (Alc. Sol.) Conc.	Y	Potassium Dichromate 40%	Y	Transformer Oil	Y
Aqua Regia	N	Cyclohexanone	S	Iron Salts	Y	Potassium Ferri/ Ferro Cyanide Sat'd	Y	Tributylphosphate	Y
Aqueous Salt Solutions (NaCl)	Y	Detergents, General	Y	Iso-Octane	S	Potassium Fluoride	Y	Trichloroacetic Acid	S
Aqueous Alkalies (NaOH)	Y	Developer, Photographic	Y	Isopropyl Acetate	Y	Potassium Hydroxide	Y	Trichloroethane	N
Arsenic Acid	Y	Dextrin Sat'd	Y	Isopropyl Alcohol	Y	Potassium Iodide	Y	Trichloroethylene	N
Arsenic Salts	Y	Dextrose Sat'd	Y	Isopropyl Ether	N	Potassium Nitrate Sat'd	Y	Tricresyl Phosphate	Y
Barium Salts	Y	Dibutyl Ether	N	Jet fuel	S	Potassium Perborate Sat'd	Y	Triethanolamine	Y
Barium Carbonate	Y	Dibutylphthalate	S	Kerosene	S	Potassium Perchlorate	Y	Triocetyl Phosphate	N
Barium Chloride	Y	Dibutyl Sebacate	S	Lactic Acid (All Conc.)	Y	Potassium Permanganate	Y	Trisodium Phosphate Sat'd	Y
Barium Cyanide	Y	Dichloroacetic Acid	S	Lanolin	Y	Potassium Persulfate Sat'd	Y	Trichloroethylene	N
Barium Hydroxide	Y	Dichloroacetic Acid, Methyl Ester	S	Latex	Y	Potassium Phosphates	Y	Turpentine Oil	N
Barium Nitrate	Y	Dichlorobenzene, Liquid	N	Lead Salts	Y	Potassium Sulfate	Y	Urea	N
Barium Sulfate	Y	Dichloroethylene	N	Lead Acetate Sat'd	Y	Propanol	Y	Urine	Y
Barium Sulfide	Y	Diesel Fuel	S	Lime	Y	Propargyl Alcohol (7%)	Y	Vegetable Oils	Y
Battery Fluid Acid	S	Diesel Oil	S	Linseed Oil	Y	Propionic Acid (50%)	Y	Vinegar	Y
Beef Tallow Emulsion, Sulfonated	Y	Diethyl Carbonate	Y	Lithium Salts	Y	Propyl Alcohol	Y	Vanilla Extract	Y
Beer	Y	Disodium Phosphate	Y	Lube Oil	Y	Propylene Dichloride (100%)	Y	Wax Alcohol	N
Benzaldehyde	Y	Diazo Salts	Y	Magnesium Salts	Y	Propylene Glycol	Y	Wetting Agents	Y
Benzene	Y	Diethylene Glycol	Y	Magnesium Carbonate	Y	Propylene Oxide	Y	Whisky	Y
Benzene Sulfonic Acid	S	Diethanolamine	S	Magnesium Hydroxide	Y	Pyridine	S	White Acid (75%)	Y
Benzoic Acid	Y	Diglycolic Acid (30%)	Y	Magnesium Nitrate	Y	Rayon Coagulation Salts	Y	Wine	Y
Benzyl Alcohol	Y	Di-isobutyl Ketone	S	Magnesium Oxide	Y	Rust Inhibitors	Y	Xylene	N
Benzyl Chloroformate	Y	Dimethylamine	Y	Magnesium Sulfate	Y	Sea Water	Y	Yeast	Y
Bismuth Salts	Y	Dimethyl Formamide	S	Maleic Acid	Y	Selenic Acid	Y	Zinc Salts	Y
Bleach Lye (10%)	Y	Dinonyl Phthalate	N	Malic Acid (1%)	Y	Sewage	Y	Zinc Sulfate	Y
Black Liquor	Y	Diocetyl Phthalate	N	Mercuric Salts	Y	Shortening	Y		
Borax Cold Sat'd	Y	Dioxane	Y	Mercurous Salts	Y	Silicic Acid	Y		
Boric Acid Dilute	Y	Diphenyl Oxide	N	Mercury	Y	Silicone Oil	Y		
Boric Acid Conc.	Y	Electrolyte	Y	Methanol	Y	Silver Salts	Y		
		Emulsions, Photographic	Y	Methyl Acetate	Y	Silver Nitrate	Y		
		Ethanol	Y	Methyl Alcohol (100%)	Y	Soda Solution (All Conc.)	Y		
		Ether	N	Methyl Amine (32%) L	Y	Soda Ash	Y		
		Ethyl Acetate (100%)	S	Methyl Bromide	N	Sodium Salts	Y		
		Ethyl Alcohol	Y	Methyl Chloride	N	Sodium Acetate Sat'd	Y		
		Ethyl Butyrate	S	Methylene Chloride	N	Sodium Acrylates	Y		
		Ethyl Chloride	N	Methyl Ethyl Ketone	S	Sodium Benzoate	Y		

CHEMICAL COMPATIBILITY KEY

STEEL - CHEMICAL COMPATIBILITY GUIDE #5

CHEMICAL RESISTANCE FOR STEEL PRODUCTS

CHEMICAL	RATING	Butadiene	N	Ethanol	N	Heptane	Y	Methyl Isobutyl Ketone	Y
		2-Butanone	Y	Ethyl Acetate	N	Hexane	Y	Pentane	Y
Acetic Acid (50%)	N	Butylene	Y	Ethyl Ether	Y	Kerosene	Y	Petroleum Ether	Y
Acetone	Y	Chlorofluorocarbons	N	Ethylene Glycol	N	Methanol	N	Toluene	Y
Aniline	N	Cyclohexane	Y	Fuel Oil	Y	Methylene Chloride	N	Trichloroethylene	N
Benzene	N	Cyclohexanone	N	Gasoline	Y	Methyl Ethyl Ketone	Y	Xylene	Y

CODES AND REGULATIONS



DOT 49 CFR 173.3 (c) Salvage Drums:

SUMMARY: Packages of hazardous materials that are damaged, defective, or found leaking and hazardous materials that have spilled or leaked may be placed in a metal or plastic removable head salvage drum that is compatible with lading and shipped for repackaging or disposal under the following conditions:

- Drum must be a UN 1A2, 1B2, 1N2 or 1H2 tested and marked for Packing Group III or higher performance standards for liquids or solids and a leakproof test of 20 kPa (3 psi).
- Capacity of the drum may not exceed 450 L (119 gallons).
- Each drum shall be provided when necessary with sufficient cushioning and absorption material to prevent excessive movement of the damaged package and to eliminate the presence of any free liquid at the time the salvage drum is closed. All cushioning and absorbent material used in the drum must be compatible with the hazardous material.
- Packaging must be marked "SALVAGE" or "SALVAGE DRUM".

(The overpack requirements of Section 173.25 do not apply to drums used in accordance with this paragraph.)



EPA 40 CFR 264.175 Containment:

Ref (b)(3) The containment system must have sufficient capacity to contain 10% of the volume of containers or the volume of the largest container, whichever is greater.

EPA 40 CFR 112 Spill Prevention, Control and Countermeasure (SPCC):

SUMMARY: The purpose of the SPCC regulation is prevention of oil discharge into navigable waters and related areas, rather than cleanup after a spill has occurred. The regulation generally affects all facilities with at least 1,320 gallons above ground storage capacity, or 42,000+ gallons underground storage capacity. The SPCC requires affected facilities to prepare and file an action plan (the SPCC Plan).

Some affected facilities include: onshore and offshore drilling, platforms, barges and mobile facilities; fixed and mobile onshore or offshore production; oil refining and storage; any industrial, commercial, agricultural or public facility that uses or stores oil; some waste treatment operations; loading racks, transfer hoses and related equipment; vehicles and pipelines. Oils, fats and greases of any kind or in any form are specifically included in the regulation.

The SPCC Plan must include elements such as: Operating procedures to prevent oil spills; Control measures to prevent spilled oil from entering surface water; Countermeasures such as Secondary Containment for spills and bulk storage compliance; Professional Engineer certification; Management approval; Facility inspections; Security; Training and more. **More information is available at www.epa.gov/oilspill.**



EPA 40 CFR 122.26 Stormwater Regulations, National Pollutant Discharge Elimination System (NPDES):

SUMMARY: The NPDES permit program controls water pollution by regulating point sources and non-point sources that discharge pollutants into United States waters. These regulations are a key component of EPA's Clean Water Act. The goal is to protect the quality of waterways by reducing the discharge of sediment, oil and chemicals into storm drains, surface and ground waters.

NPDES requires Minimum Control Measures to be put into place by activities in affected Urbanized Areas (UA). Visit www.epa.gov/owm (US EPA Office of Wastewater Management), Appendix 6 to determine particular affected places.

This program includes the development and implementation of the Stormwater Pollution Prevention Plan (SWPPP). The SWPPP identifies: Potential Sources of Pollution and Exposed Materials; a history of past spills and leaks; BMPs; Non-Structural controls (Good Housekeeping Practices, Spill Prevention and Response); Structural controls such as Containment including Pollution Incident Prevention Plans (PIPP) and Spill Prevention, Control, and Countermeasures (SPCC) plans.

29 CFR 1910.120 Hazardous Waste Operations and Emergency Response:

SUMMARY: Suitable quantities of proper absorbents shall be kept available and used in areas where spills, leaks or ruptures may occur.

29 CFR 1910.22 Workplace Housekeeping:

SUMMARY: Every workroom floor shall be maintained in a clean and, so far as possible, a dry condition.

29 CFR 1910.1450

SUMMARY: Laboratories must have containment and clean-up materials for spills and leaks to reduce occupational exposure to hazardous chemicals.

29 CFR 1910.178(g)(2)

SUMMARY: Facilities shall be provided for flushing and neutralizing spilled electrolyte, for fire protection, for protecting charging apparatus from damage by trucks, and for adequate ventilation for dispersal of fumes from gassing batteries. (Battery Storage)

40 CFR 263.31

SUMMARY: Transport and carriers must clean up any hazardous waste discharge that occurs during transportation.

49 CFR 171.8 Overpack Containers:

SUMMARY: An Overpack is a larger container in which a smaller one can be placed. Made from any material (from traditional metal to hard plastic). Overpack drums are protective packaging to contain non-hazardous materials or provide outer protection. Note: Standard Overpacks are not for hazard waste transport. In these cases, a Salvage Drum is needed.



UFC 79.406 Uniform Fire Code:

SUMMARY: When used as a substitute for spill and damage control and secondary containment, pallets shall comply with: liquid-tight sump; sump capacity of at least 66 gallons ; compatible substances; provide sump protection from rain water.

IFC 2704.2.3 International Fire Code:

SUMMARY: When used as an alternative to spill control and secondary containment for outdoor storage, containment pallets shall comply with all of the following: liquid-tight sump accessible for visual inspection shall be provided, The sump shall be designed to contain not less than 66 gallons, Exposed surfaces shall be compatible with material stored, Containment pallets shall be protected to prevent collection of rainwater within the sump.

NFPA 30 Flammable and Combustible Liquids:

SUMMARY: Warehouses, separate buildings containing flammable and combustible liquids whose flash point does not exceed 100°F.

NFPA 70 National Electrical:

SUMMARY: Covers the installation of electrical conductors, equipment, and raceways; signaling and communications conductors, and optical fiber cables.

NFPA 400 Hazardous Materials:

SUMMARY: Applies to the storage, use, and handling of hazardous materials in all occupancies and facilities including nitrites, corrosives, flammables, peroxide formulations, oxidizers, water-reactives, compressed gases, and cryogenic fluids.



OSHA 29 CFR 1910.253 Storage of Cylinders:

SUMMARY: Cylinders shall not be kept in unventilated enclosures such as lockers and cupboards. (b)(2)(ii) Cylinders should be kept at least 20 feet (6.1m) from highly combustible materials, should be placed away from elevators, stairs and gangways. (b)(3)(i) For storage in excess of 2,000 cubic feet (56m(3)) total gas capacity of cylinders or 300lb (135.9kg) of liquefied petroleum gas, separate rooms or compartments shall be provided.



FM (Factory Mutual) Global 6049:

SUMMARY: A combination of pressure-relieving (venting) and pressure resisting exterior construction which is intended to mitigate over-pressure damage to the building in case of a vapor-air deflagration. The design of relieving and resisting features must be engineered to account for fuel, surface area, or the enclosure, vent area and structural loads imposed by the deflagration.



HOMELAND SECURITY AUTHORIZED EQUIPMENT LIST

7.2.2.4: Kit, Chemical Sampling/Evidence, Containment Vessels (AEL Ref# 07CS-01-KVES)

ENPAC PRODUCTS: • Poly-Overpack[®] Salvage Drums sizes 20-gallon - 110-gallon.

8.2.6: Equipment, Technical Decontamination-Wet (AEL Ref# 08D2-06-TDEW).

ENPAC PRODUCTS:	• Stinger Yellow Jacket [™]	• SpillPal [™]	• QVAC [™] 100
	Decontamination Berms.	• Prowler [™] Pools	• Sorbents
	• Stinger [™] Containment Berms,	• Hazmat Pool [™]	• Spill Kits
	both the snap-up and snap-foam styles.	• 2-, 4-, 6-, & 8-Drum Workstations [™]	

8.2.11: Device, Liquid Decontamination Equipment (AEL Ref# 08D2-10-LDCD)

ENPAC PRODUCTS:	• Stinger Yellow Jacket [™]	• SpillPal [™]	• QVAC [™] 100
	Decontamination Berms.	• Prowler [™] Pools	• Sorbents
	• Stinger [™] Containment Berms,	• Hazmat Pool [™]	• Spill Kits
	both the snap-up and snap-foam styles.	• 2-, 4-, 6-, & 8-Drum Workstations [™]	

8.2.12: Drum, Waste Water Containment (AEL Ref# 08D2-11-WWCD)

ENPAC PRODUCTS: • Poly-Overpack[®] 95 Salvage Drum

9.2.3.2: Supplies, Biohazard Disposal (AEL Ref# 09MS-03-BIOD)

ENPAC PRODUCTS:	• Poly-Overpack [®] Salvage Drums	• Thermo-Sorb [®] Sorbents	• Medical Spill Kits
	sizes 20-gallon - 110-gallon.		

16.2.1: Container, Packing, Biohazard (AEL Ref# not specified)

ENPAC PRODUCTS:	• Poly-Overpack [®] Salvage Drums	• Spill Kits
	sizes 20-gallon - 110-gallon.	• Trauma-Sorb